



T2035H-6E 20A TRIAC

Rev.A.1.0

D

1

Peak pulse voltage ($T_j=25$; non-repetitive, off-state; FIG.8)	V_{pp}	4	kV
--	----------	---	----

ELECTRICAL CHARACTERISTICS)kV

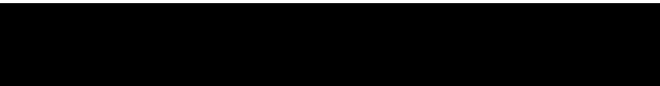


FIG.1 Maximum power dissipation versus RMS on-state current

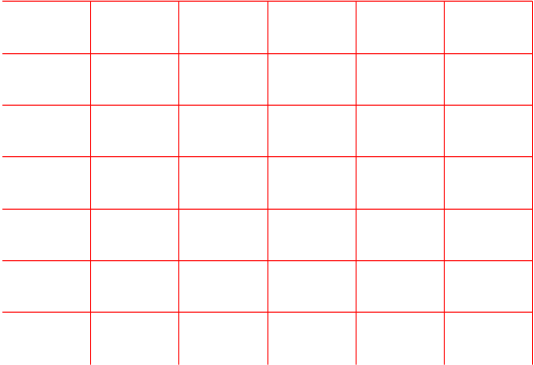
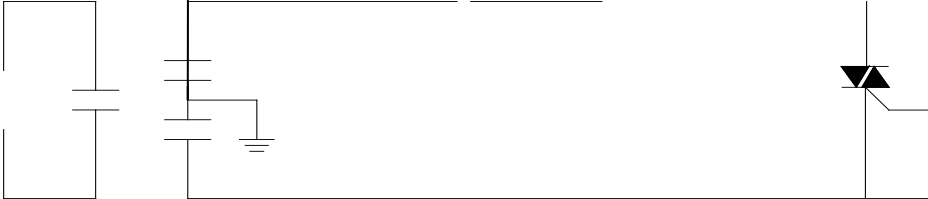


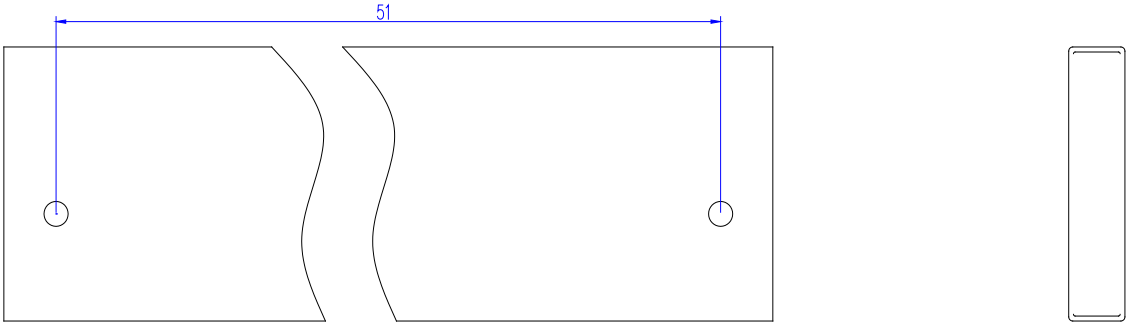
FIG.2: RMS on-state current versus case temperature

T2035H-6E

FIG.8 Test circuit for inductive and resistive loads to IEC-61000-4-5 standards



DELIVERY MODE



Information furnished in this document is believed to be accurate and reliable. However, Jiangsu JieJie Microelectronics Co., Ltd. assumes no responsibility for the consequences