



T0435H-8E 4A TRIAC

Rev.A.1.0

DESCRIPTION:

T0435H-8E is a

4A

800V

TO-263

package

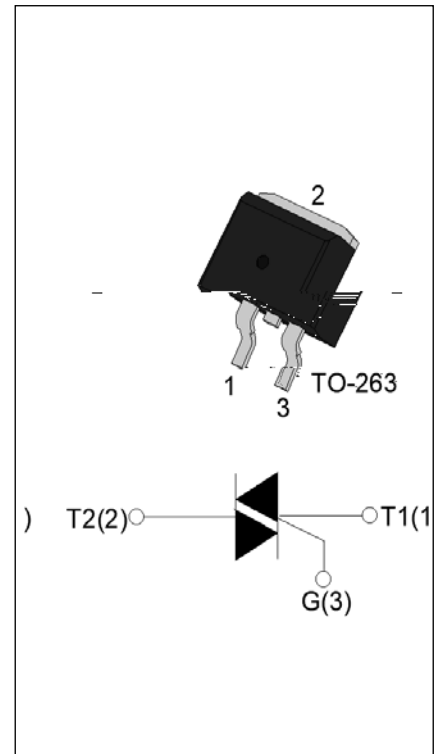
with a

maximum

junction

MAIN FEATURES

Symbol	Value	Unit
I_T	4	A
V_{TM} / V_{RM}	800	V
$I_{GT} / I_{GT1} / I_{GT2}$	35/35/35	mA



ABSOLUTE MAXIMUM RATINGS

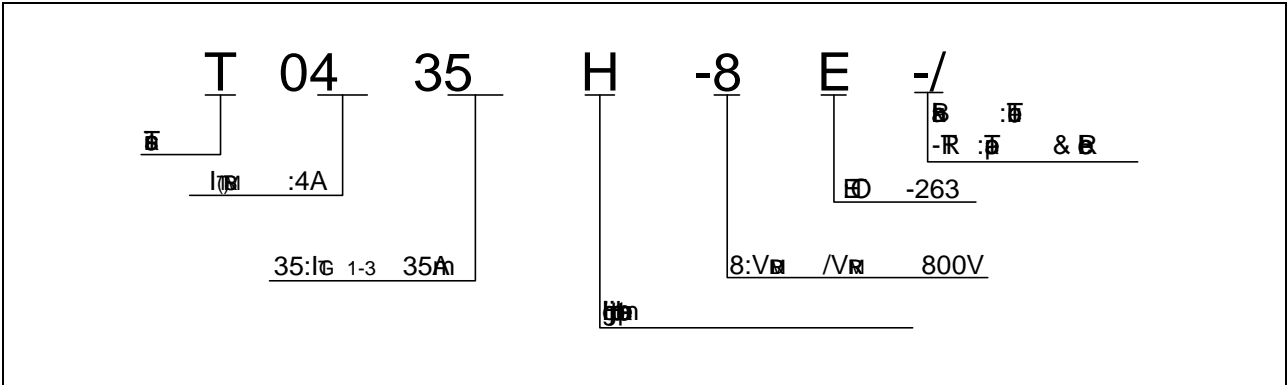
Parameter	Symbol	Value	Unit
Storage temperature	T_S	-40-150	
Junction temperature	T_j	-40-150	
Peak reverse voltage (j=25°C)	V_{RM}	800	V
Peak forward voltage (j=25°C)	V_{FM}	800	V
Peak non-repeating surge current (c 137°C)	I_{TSM}	4	A
Non-repeating surge current (p=20µs, j=25°C)	I_{TS}	40	A
Non-repeating surge current (p=16.6µs, j=25°C)		44	
Repeating surge current (p=10µs, j=25°C)	$I_{TSM}^2 t$	8	A ² s
Surge current (I _G =2×I _{GT} , f=100Hz, j=150°C)	I_{TS}	80	A s
Surge current (p=20µs, T j=150°C)	I_{TS}	4	A
Surge power (j=150°C)	P_{SM}	1	W
Power	P_{RM}	10	W

I_G ($T_j=25$; I_G - I_G 8)	V_p	4	V
--	-------	---	---

ELECTRICAL CHARACTERISTICS ($T_j=25$)

Symbol	Test Condition	Quadrant	Value	Unit
I_G	$V_D=12V$ $R_L=33$	- -	35	μA
V_G		- -	1	V
V_G	$V_D=V_{GS}$ $T_j=150$ $R_L=3.3K$	- -	0.2	V
I_L	$I_G=1.2I_G$	-	40	μA
			50	
I_H	$I_T=100\mu A$		30	μA

ORDERING INFORMATION



MARKING

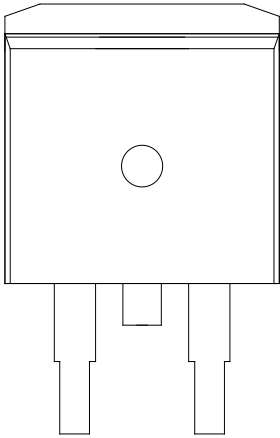




FIG.1 
a 

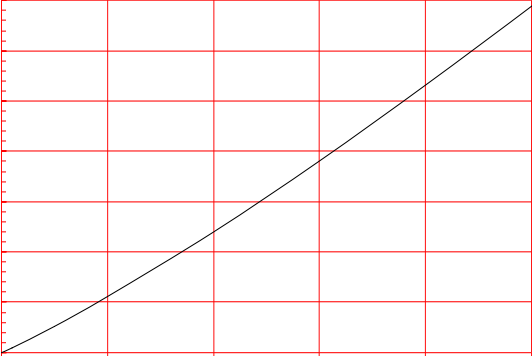
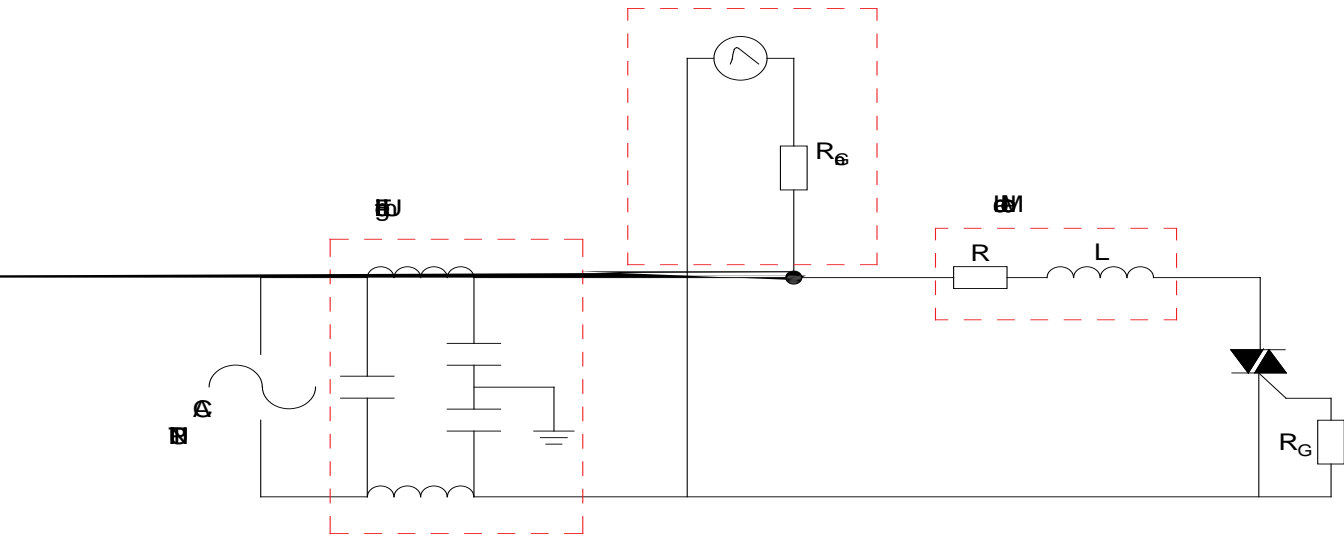


FIG.2:  - 
b 

T0435H0435H0 435H

435H35Hieie



T0435H-8E

DELIVERY MODE

