

- 6 7 = % : \$ 7 5 , \$ & 5 H Y \$

^ Z / W d / K E W

7 K H - 6 7 = % : W X U L W D B E L O H V I R U J H Q H U D O S X U S R V H
 \$ & V Z L W F K L Q J , W F D Q E H X V H G D V D Q 2 1 2)) I X Q F W L R Q L Q
 D S S O L F D W L R Q V V H F X O D D W K R Q W L Q G X F W L R Q P R W R U
 V W D U W L Q J F L U F R Q W W V R I Q R U S H K U D D W L R Q L Q O L J K W
 G L P P H U V P R W R U V S H H G F R Q W U R O O H U V - 6 7 = % :
 V Q X E E H U O H V V W O O D E H L F R I P P S H O F L H G I R U X V H R Q
 L Q G X F W L Y H O R D G V L Q % M H X V L Q Q J F H U D P L F S D G
 - 6 7 = % : S U R Y L B E M L Q V U X D W W L R Q Y R O W D J H R I
 9 5 0 6 F R P S O \ L Q J Z L W K 8 / V W D Q G D U G V) L O H U H I (
 3 D F N D J H 7 2 3 L V 5 R + 6 F R P S O L D Q W

D / E & d h Z ^

6 \ P E R O	9 D O X H	8 Q L W
, 7 5 0 6		\$
9 5 0 9 5 0		9
, * 7		P \$

^ K > h d D y / D h D Z d / E ' ^

3 D U D P H W H U	6 \ P E R O	9 D O X H	8 Q L
6 W R U D J H M X S H F W L R Q U W H L P D Q J H V W J		7	
2 S H U D W L Q J W H F O S H W L R Q X U H	U D Q J H	7	
5 H S H W L W L Y H S H D N R M I V W D W H 0 Y R O W D J H		7	9
5 H S H W L W L Y H S H D N W H Y H U V H 9 5 6 R O W D J H		7	9
5 0 6 R Q V W D W H & O F X U U H Q W	7 , 7 5 0 6		\$
1 R Q U H S H W L W L Y H V X U J H S H D N R Q V W D W H F X U U H Q W			\$
IXOO F _s \ F O H M W			\$
1 R Q U H S H W L W L Y H V X U J H S H D N 7 6 0 R Q V W D W H F X U U H Q W			\$
IXOO F _s \ F O H P V W 7			\$
, W Y D O X H I R U P X V L M Q J W	, W		\$ V
& U L W L F D O B D W G R W D W H F X U U H Q W	G , G W		\$ V
; h , * 7 l +] M 7			\$
3 H D N J D W H F X U U H M Q W W	, * 0		\$

-67 = %:

-LH-LH 0LFURHOHFWURQL

\$YHUDJH JDWH SRZHU GLVVL3DWRLRQ 7			
3HDN JDWH SRZHU	3*0		:
3HDN SXOVH YROWDJH 7M QRQ UHSHWLWLYH RII VVDWH), *	9SS		

> dZ/ > , Z d Z7^d/XQOHVV RWKHUZLVH VSHFLILHG

6\PERO	7HVW &RQGLWLRQ	4XDGUDQW	9DOXH
,7		0\$;	P\$
9*7	9 9 5	0\$;	9
9*	9 9.50 7M 5/ N	0,1	9
/	,* ;7	0\$;	P\$
,+	,7 P\$	0\$;	P\$

-67 = %:

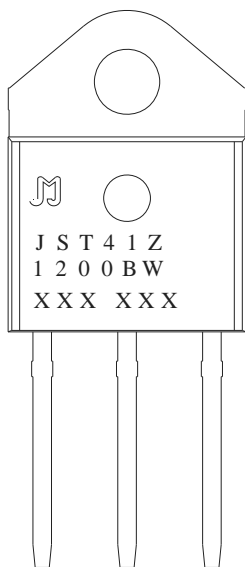
-LH-LH 0LFURHOHFWURQL

KZ Z/E' /E&KZD d/KE

<p>-</p> <p style="font-size: 2em; font-weight: bold;">67</p> <p>-LH-LH 0LFURHOHFWURQLFV &R /WG</p> <p style="text-align: center;">7ULDFV</p> <p style="text-align: center;">,7 506 \$</p> <p style="text-align: right;">= 72 3, QV</p>	<p style="font-size: 2em; font-weight: bold;">=</p> <p style="text-align: right;">% : *7 0 P\$</p> <p style="text-align: center;">950 9501 9</p>
---	--

%

D Z</E'



- 67 = % :

- LH-LH 0LFURHOHFWURQL

), * 0D[LPXP SRZHU GLVVLSDWLRQ Y)HUV506500 VWDWH FXUUHQW YH
RQ VWDWH FXUUHQW WHPSHUDWXUH

oi W-t•

oi

ni

oi

ii

ii

ii

i

i

o

io

io

ii

oi

oo

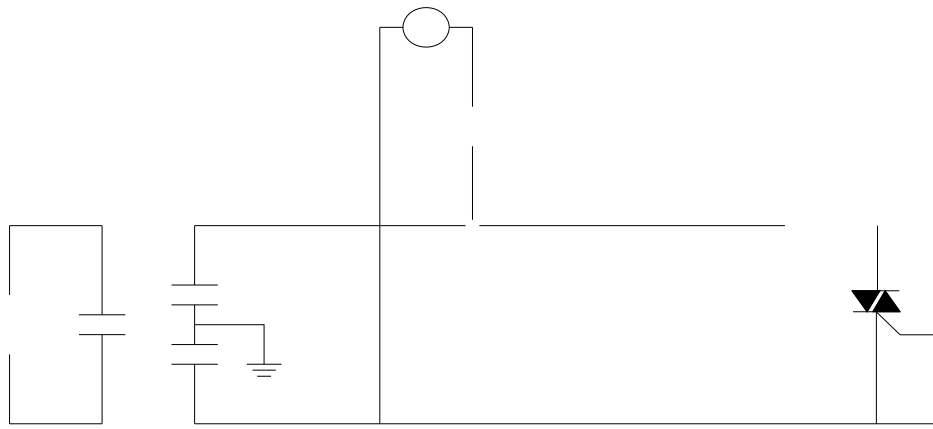
/a-z.07*

Horizontal lines for writing or data entry.

- 67 = % :

- LH-LH 0LFURHOHFWURQL

), * Ö7HVW FLUFXLW IRU LQGXFWLYH DQG UMDQGDUGW OF



-67 = %:

-LH-LH 0LFURHOHFWURQL

KZ Z/E' /E&KZD d/KE

2UGHU FR	9ROWD 9'50 950 9	,*7 P\$	3DFNDJH	%DVH T SFV	'HOLYHU\ PRGH
-67 = %:			72 3 ,QV		7XEH

-67 = %:

-LH-LH 0LFURHOHFWURQL

W < ' D , E/ > d



,QIRUPDWLRQ IXUQXPHQW ILQ WKOLHGRHG WR EH DFFXUDWH D
 -LDQJVVX -LH-LH 0L&URRHOWHG WDVROLFHV OLWUHRUS ROKHLE ERQVHT
 RI XVH ZLWKRXW FRQVLGHUDWLRQ IRG MWFKQLGURPDPDWRQRQ
 LQ WKLV GRFXPHQWKDQJXZLWHRWWRQRWLFH DSDUW IURP V
 VLJQHGH -LDQJVVX&OLHVLZILWRKPWKH DJUHHPHQW
 3URGXFWV DQG LQIRUPDWLRQ SURYLGHG LQJHPWKWVRG RSDXPH
 -LDQJVVX -LH-LH DVVXRLEVOQRW\UIHRUS DQV LQIULQJHPHQW RI
 SDUWLHVZKLFKPD\UHVX&MSURBWKWXD&RGRIRUPDWRQRQ 7KL
 VXSHUVHGHV DQG UHSODFHV DOO LQIRUPDWLRQ SUHYLRXV
 LV D UHJLVWHUHG WUDGHDPDUN RI -LDQJVVX -LH-LH 0L
 &RS\UKJKW -LDQJVVX -LH-LH 0L&URRHOWHG WDVROLFHGLJKWV UHVH