

JIEJIE MICROELECTRONICS CO., LTD.

---

Average gate power (6 (er))13 dissipation ( )

$P_{G(AV)}$

0.5

W

ORDERING INFORMATION

<b>J</b>	<b>ST</b>	<b>20</b>	<b>A</b>	<b>-800</b>	<b>BW</b>
JieJie Microelectronics Co., Ltd.	Triacs	$I_T(RMS):20A$	A:TO-220A(Ins)	800:V <sub>DRM</sub> /V <sub>RRM</sub> 1800 V	BW:IGT1-3 050 mA

MARKING

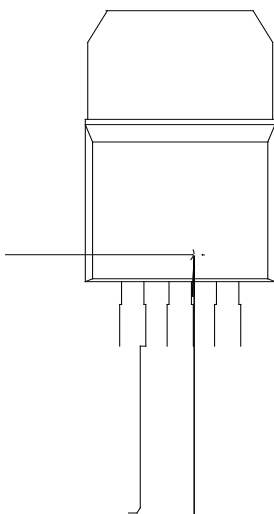


FIG.1: Maximum power dissipation versus RMS on-state current

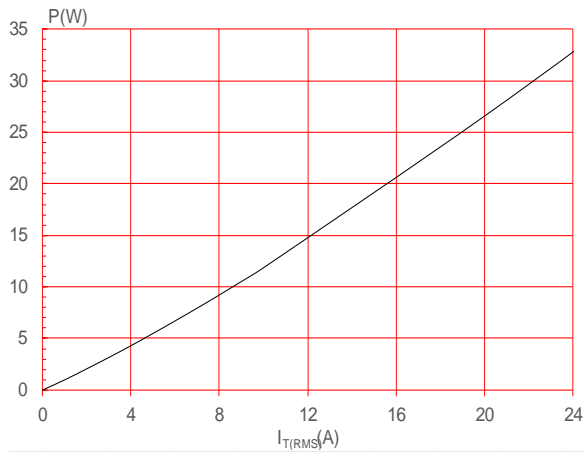


FIG.2: RMS on-state current versus case temperature

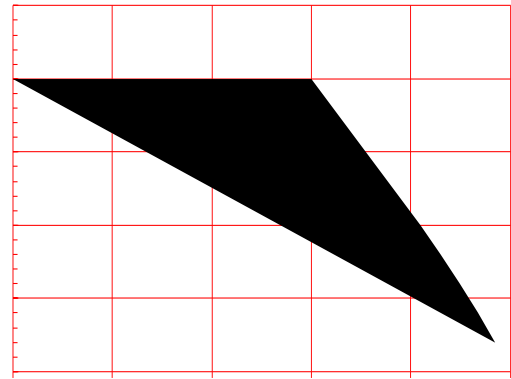
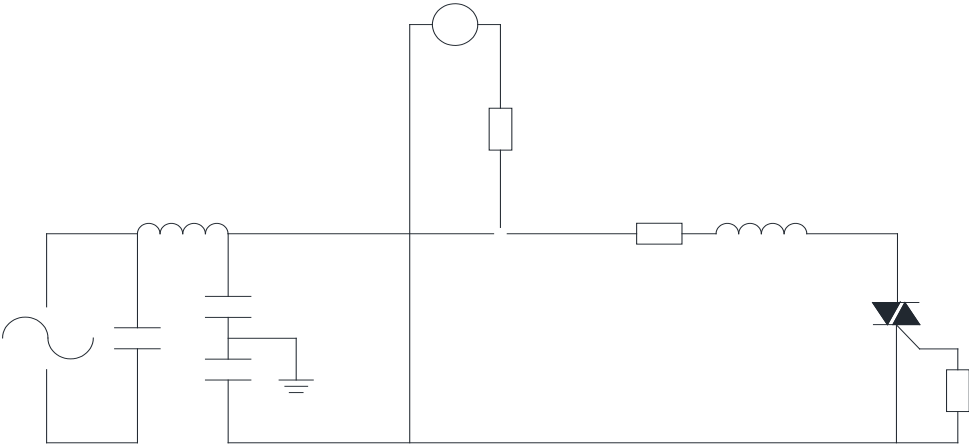


FIG.7 ÖTest circuit for inductive and resistive loads to IEC-61000-4-5 standards



## ORDERING INFORMATION

Order code	Voltage $V_{DRM}/V_{RRM}$ (V)	IGT(mA)	Package	Base qty. (pcs)	Delivery mode
		H- I- J			
JST20A-800BW	800	50	TO-220A(Ins)	50	Tube

## Document Revision History

Date	Revision	Changes
Apr.12, 2023	A.1.0	Last updated
Oct.13, 2025	A.1.1	Revise PACKAGE MECHANICAL DATA



Information and... [ont28. o,Isol 11. TDm [().4,( )22 (C1 Tc -0 0 2 Tc 0.671e a i)64 n(o)10e4 un1