

pl	Value	Unit
	-40-150	
	-40-125	

4 0 0 8.00248.64 356.88 Tm 47 f 353

FIG.1: Maximum power dissipation versus RMS on-state current

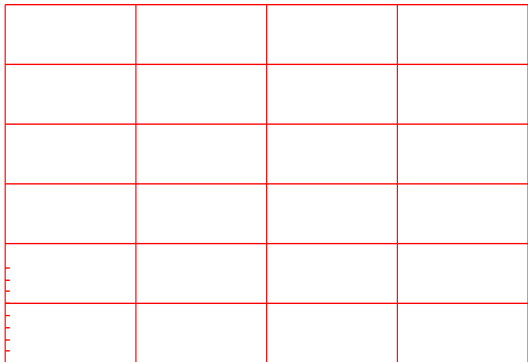
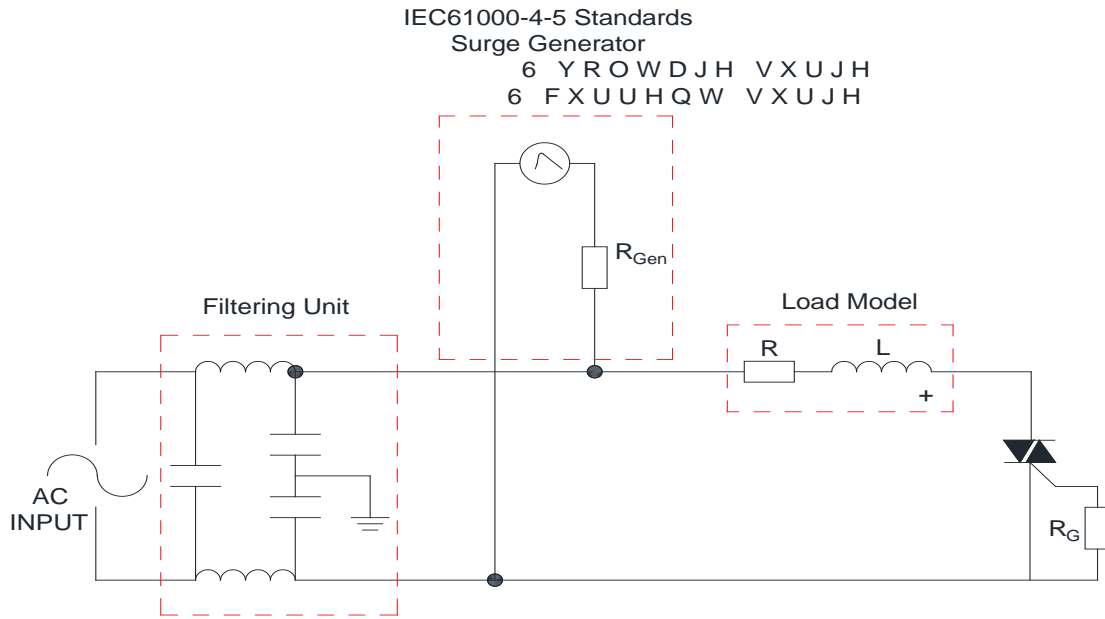


FIG.2: RMS on-state current versus case temperature

FIG.7: Relative variations of gate trigger current,
holding current and latching current versus
junction temperature

FIG.8: Test circuit for inductive and resistive loads to IEC-61000-4-5 standards



PACKAGE MECHANICAL DATA

Ref.	Dimensions					
	Millimeters			Inches		
	Min.	Typ.	Max.	Min.	Typ.	Max.
A	9.90					
B	14.70					
C						
D						
E						
F						

DELIVERY MODE

