



JST16A-600BW 16A TRIAC

Rev.A.1.2

DESCRIPTION:

The JST16-600BW triac is suitable for
 switching AC loads. It has a
 maximum RMS current of 16A at
 25°C. The maximum peak current is
 102A. The maximum peak-to-peak
 current is 160A. The maximum
 surge current is 160A. The
 maximum surge current is 160A.
 (E252906).

MAIN FEATURES

ABSOLUTE MAXIMUM RATINGS

Parameter	Symbol	Value	Unit
Storage temperature range	T_{stg}	-40-150	°C
Operating temperature range	T_j	-40-125	°C
Repetitive peak forward current (T _j =25°C)	I_{DRM}	16	A
Repetitive peak reverse current (T _j =25°C)	I_{RRM}	16	A
RMS on-state current (I _o =102A)	$I_T(RMS)$	16	A
Non-repetitive peak forward current (I _o =102A, t _{on} =200µs, t _{off} =25µs)	I_{TSM}	160	A
Non-repetitive peak reverse current (I _o =102A, t _{on} =200µs, t _{off} =25µs)	I_{TSM}	160	A

P_{GM}	k	atw	P_{GM}	10	W
P_{GM}	k	saq ($T_j=25$; -rti ti yof -bt; FIG.7)	V	4	

k

ELECTRICAL CHARACTERISTICS ($T_j=25$ u

Symbol	Test Condi	Qdrant	Value		Uni
I_T	$V_D = 12V$ $R_L = 33$	- -	MX .	50	m
V_{GT}		- -	MX .	1	V
V_{GD}	$V_D = V_{DRM}$ $T_j = 125$ $R_L = 3.3$ k	- -	MIN.	0	V

ORDERING INFORMATION

<p>J</p> <p>JieJie Microelectronics Co., Ltd.</p>	<p>ST 16</p> <p>Triacs</p> <p>$I_{T(RMS)}: 16$</p> <p>: TO-220 (1)</p>	<p>-600 BW</p> <p>n</p> <p>BW: $t_{1-3} 50m$</p> <p>600: $V_{BRM} / V_{RRM} 600V$</p>
---	---	---

MARKING

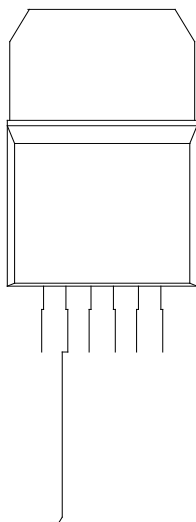


FIG.1: Maximum
output current

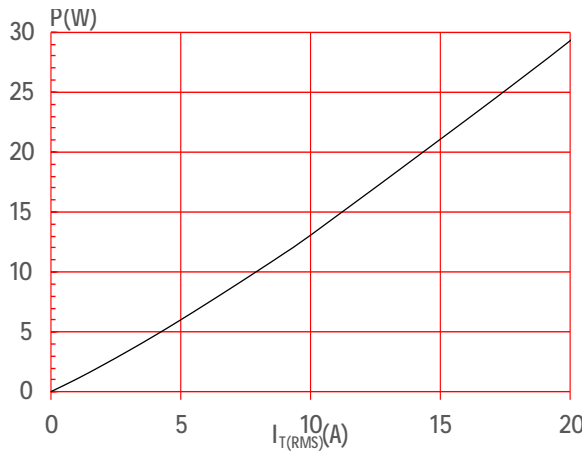


FIG.3: Signal
rate

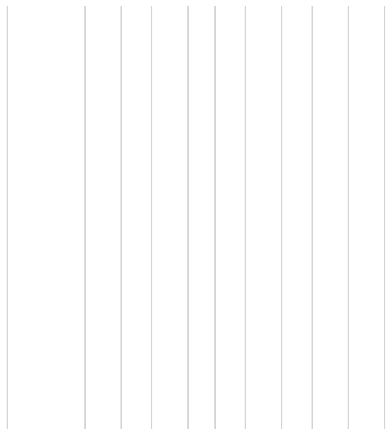


FIG.2: RMS output current
vs. temperature

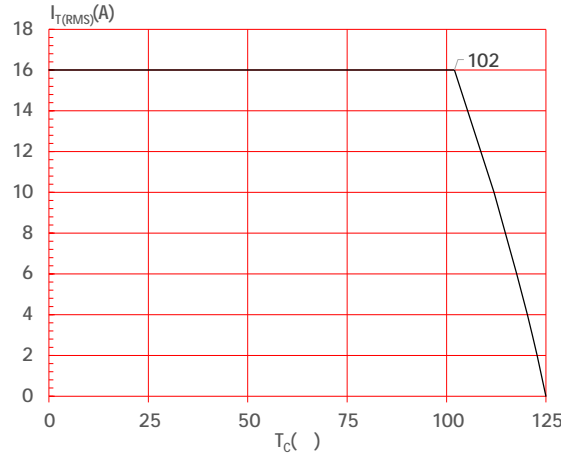
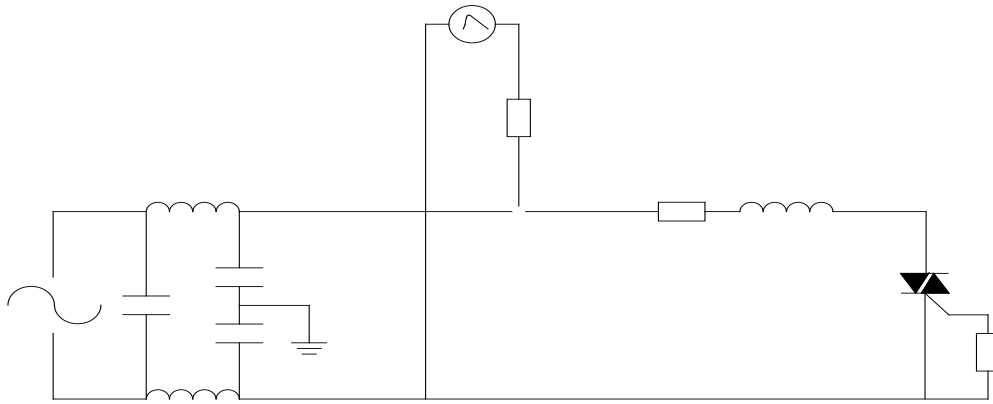
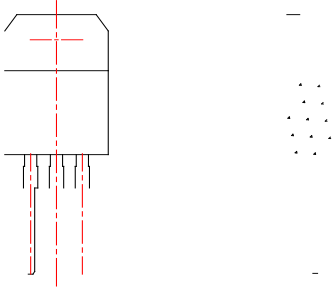



FIG.4: Output characteristic
curve



JST16A-600BW

PACKAGE MECHANICAL DATA



I n
 Jia n
 ó s i n t o c o n
 i n
 \$ g n
 P u c s a n
 Jia n
 w i a y h e f o r h i s ó s c o u h c s i i T h i s o c m
 a t i d . n
 i s a g i t e d e r k ó J i a C
 ' 2026 Jia n