



**ELECTRICAL CHARACTERISTICS** (T<sub>j</sub>=25 unless otherwise specified)

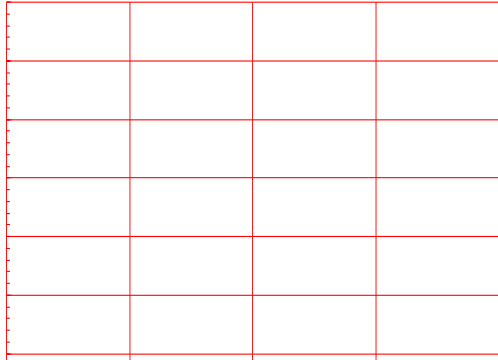
Symbol	Test Condition	Quadrant	Value		Unit
I <sub>GT</sub>	V <sub>D</sub> =12V R <sub>L</sub> =33	- -	MAX.	25	mA
				70	

V<sub>GT</sub>

ORDERING INFORMATION

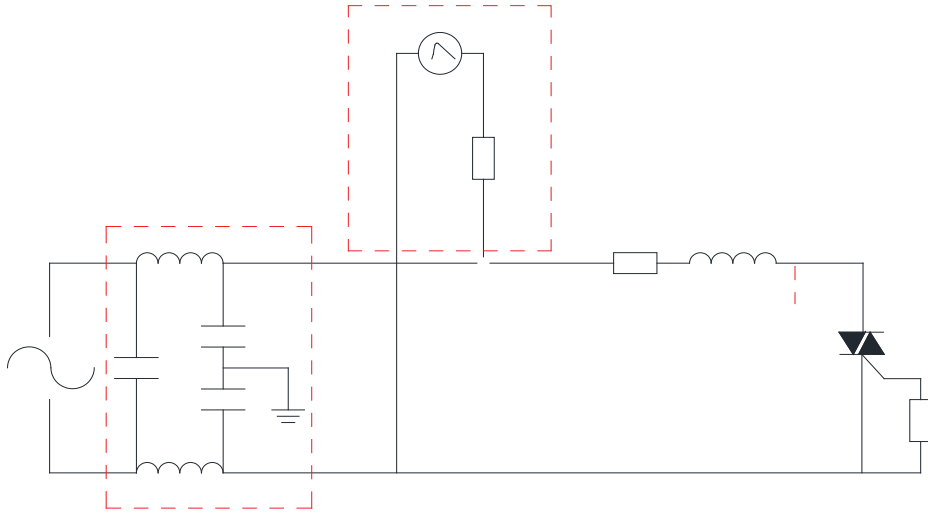
J   ST   139   C   -600   F

**FIG.1:** Maximum power dissipation versus RMS on-state current



**FIG.2:** RMS on-state current versus case temperature

FIG.7 Test circuit for inductive and resistive loads to IEC-61000-4-5 standards



**ORDERING INFORMATION**

Order code	Voltage $V_{DRM}/V_{RRM}$ (V)	IGT(mA)		Package	Base qty. (pcs)	Delivery mode
		-	-			
JST139C-600F	600	25	70	TO-220C	50	Tube

**Document Revision History**

Date	
------	--

PACKAGE MECHANICAL DATA 



