

Peak voltage (non-repetitive, off-state; FIG.7)	V_{pp}	4	kV
--	----------	---	----

STATIC CHARACTERISTICS ($T_j=25^\circ\text{C}$ unless otherwise specified)

Test Condition	Quadrant	Value		Unit
$V_D=12\text{V}$ $R_L=33\Omega$	- -	MAX.	50	mA
			100	
	ALL	MAX.	1	V
$V_D=V_{DRM}$ $T_j=125^\circ\text{C}$ $R_L=3.3\text{k}\Omega$	ALL	MIN.	0.2	V
$I_{G1} \leq 2I_{GT}$	- -	MAX.	70	mA
			100	
$I_T=500\text{mA}$		MAX.	60	mA

V

ORDERING INFORMA

FIG.1: Maximum power dissipation versus RMS on-state current

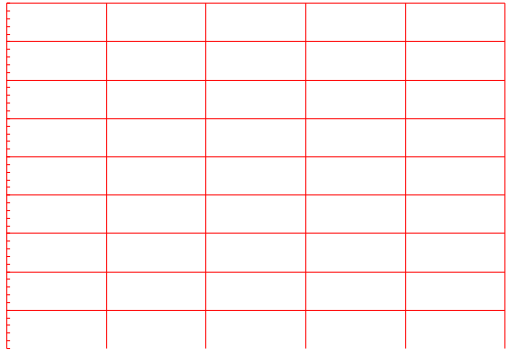
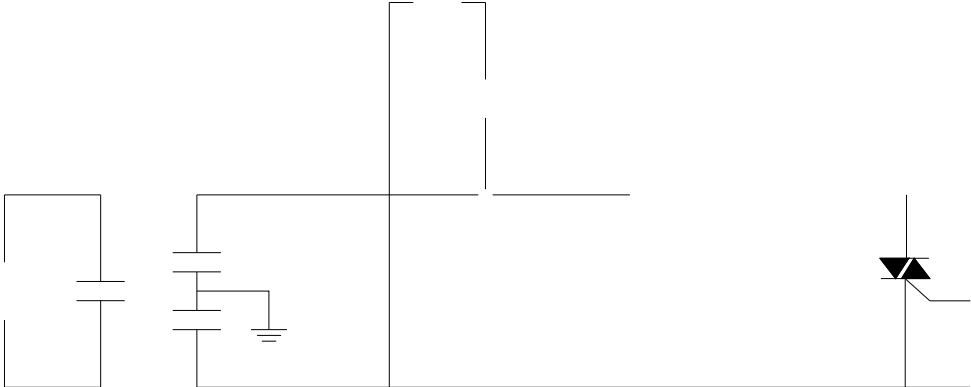


FIG.2: RMS on-state current versus case temperature T_c

FIG.7 Test circuit for inductive and resistive loads to IEC-61000-4-5 standards



ORDERING INFORMATION

Order code	Voltage V _{DRM} /V _{RRM} (V)	IGT(mA)		Package	Base qty. (pcs)	Delivery mode
		-	-			
JST137F-600G	600	50	100	TO-220F(Ins)	50	Tube

Document Revision History

Date	Revision	Changes
Apr.14, 2023	A.1.0	Last updated
Oct.15, 2025	A.1.1	Revise PACKAGE MECHANICAL DATA

PACKAGE MECHANICAL DATA

JST137F-600G