



JST136C-800T 4A TRIAC

Rev A.1.1

DESCRIPTION:

The JST136C-800T triac is suitable for general purpose AC switching. It can be used as an ON/OFF function in applications such as heating regulation, induction motor starting circuits, for phase control operation in light dimmers, motor speed controllers. From T2 terminals to external heatsink. Package TO-220C is RoHS compliant.

MAIN FEATURES

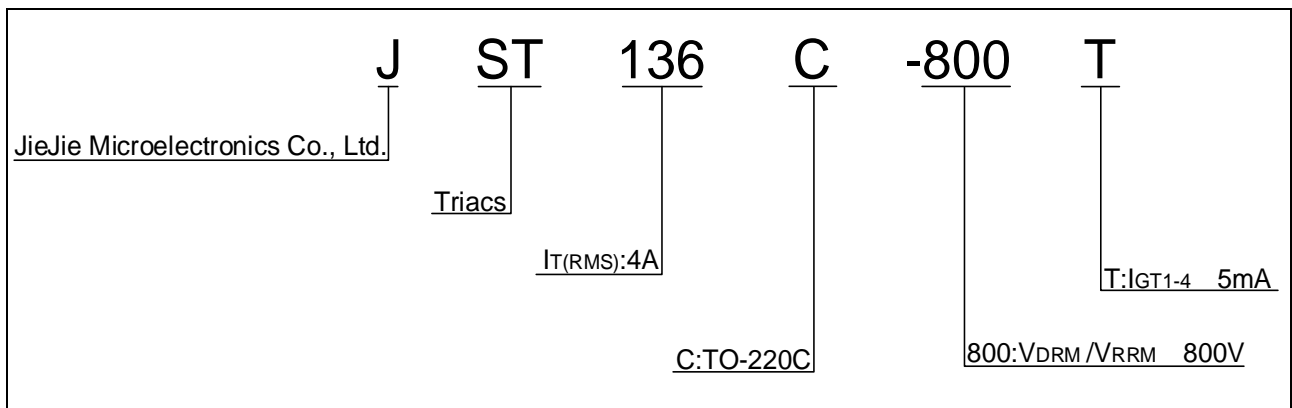
ABSOLUTE MAXIMUM RATINGS

Parameter	Symbol	Value	Unit
Storage junction temperature range	T <sub>stg</sub>	-40-150	
Operating junction temperature range	T <sub>j</sub>	-40-125	
Repetitive peak off-state voltage (T <sub>j</sub> =25 °C)	V <sub>DRM</sub>	800	V
Repetitive peak reverse voltage (T <sub>j</sub> =25 °C)	V <sub>RRM</sub>	800	V
RMS on-state current (T <sub>c</sub> = 110 °C)	I <sub>T(RMS)</sub>	4	A
Non repetitive surge peak on-state current (full cycle , t <sub>p</sub> =20ms , T <sub>j</sub> =25 °C)	I <sub>TSM</sub>	35	A
Non repetitive surge peak on-state current (full cycle , t <sub>p</sub> =16.6ms , T <sub>j</sub> =25 °C)		38.5	

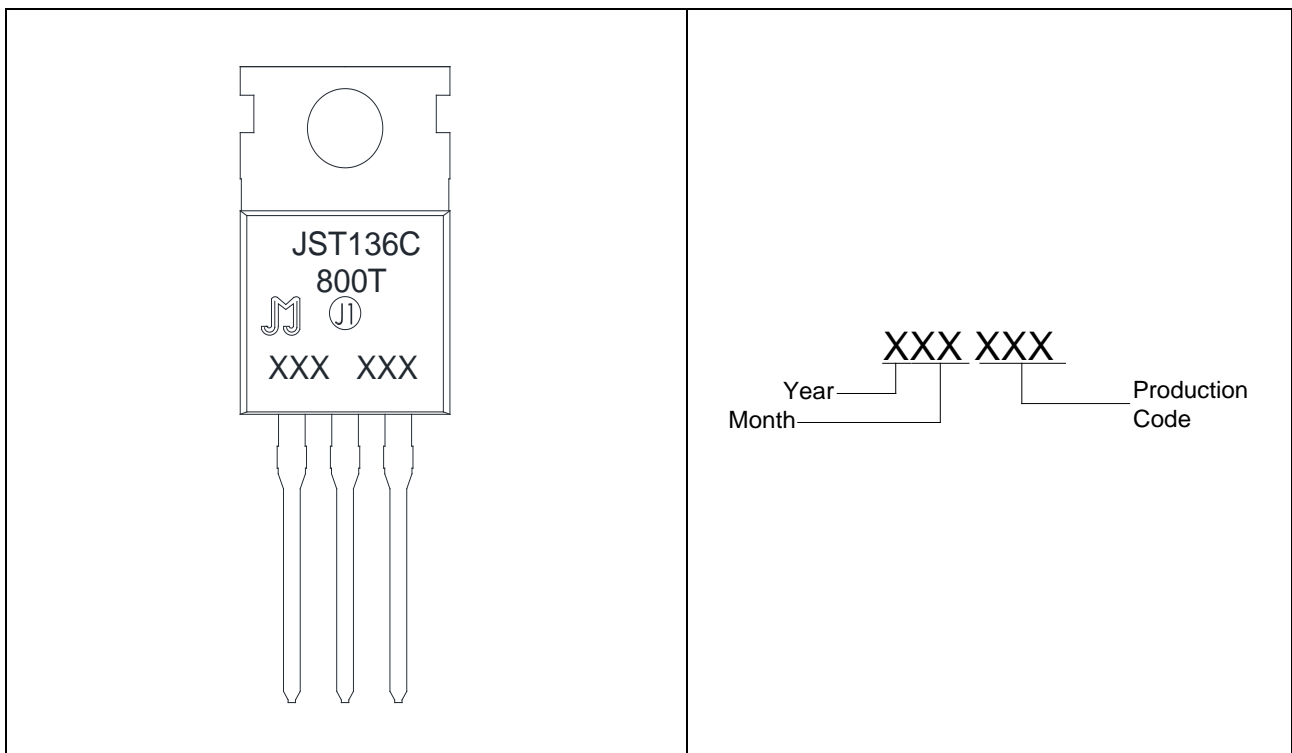




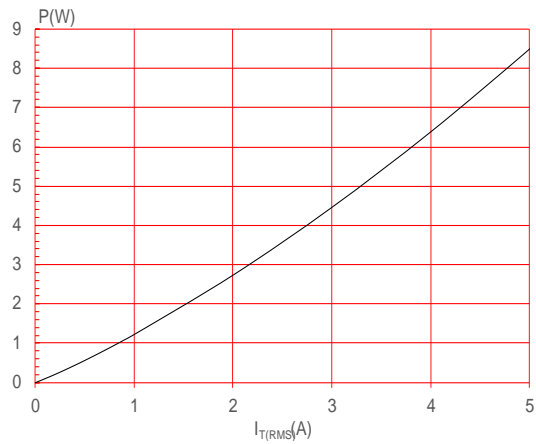
**ORDERING INFORMATION**



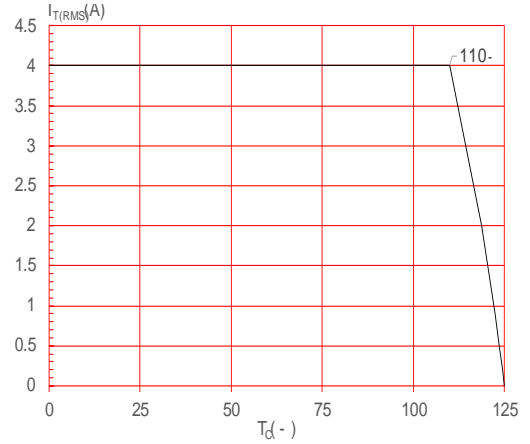
**MARKING**



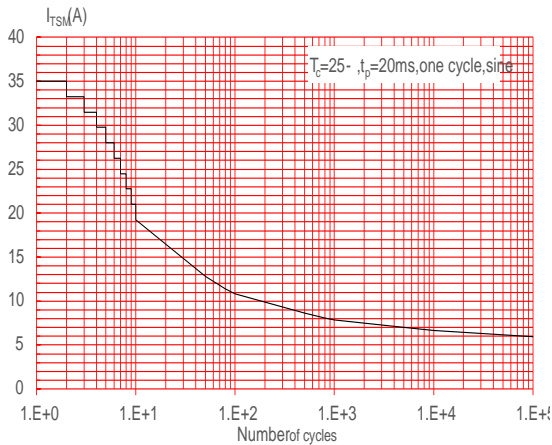
**FIG.1:** Maximum power dissipation versus RMS on-state current



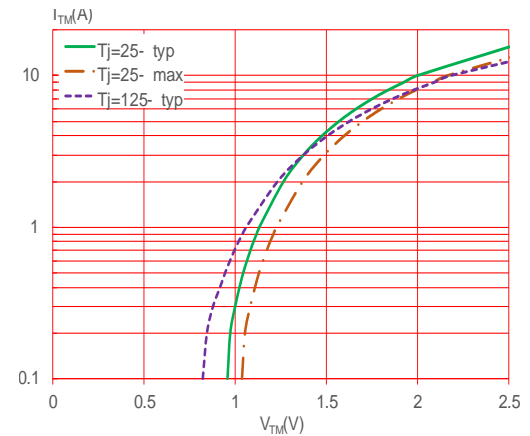
**FIG.2:** RMS on-state current versus case temperature



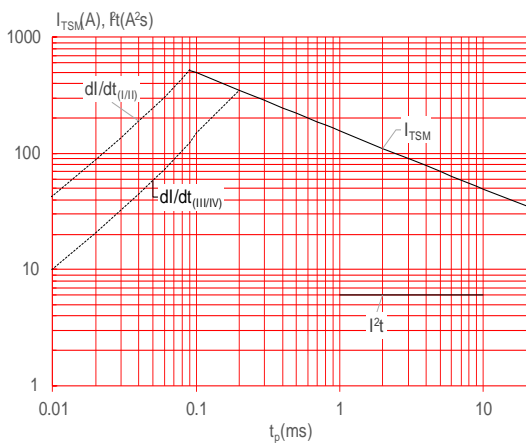
**FIG.3:** Surge peak on-state current versus number of cycles



**FIG.4:** On-state characteristics



**FIG.5:** Non-repetitive surge peak on-state current for a sinusoidal pulse with width  $t_p < 20\text{ms}$ , and corresponding value of  $I^2t$  ( - :  $di/dt < 50\text{A}/\mu\text{s}$ ; - :  $di/dt < 30\text{A}/\mu\text{s}$ )



**FIG.6:** Relative variations of gate trigger current, holding current and latching current versus junction temperature

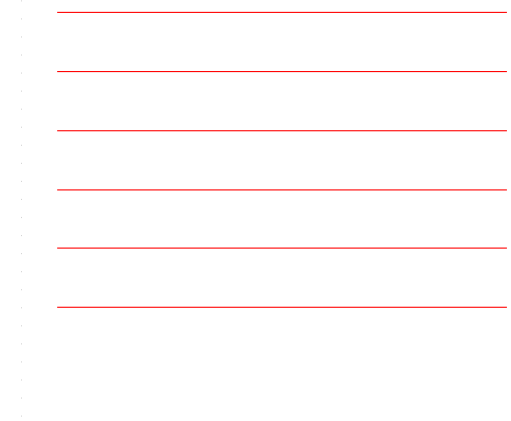
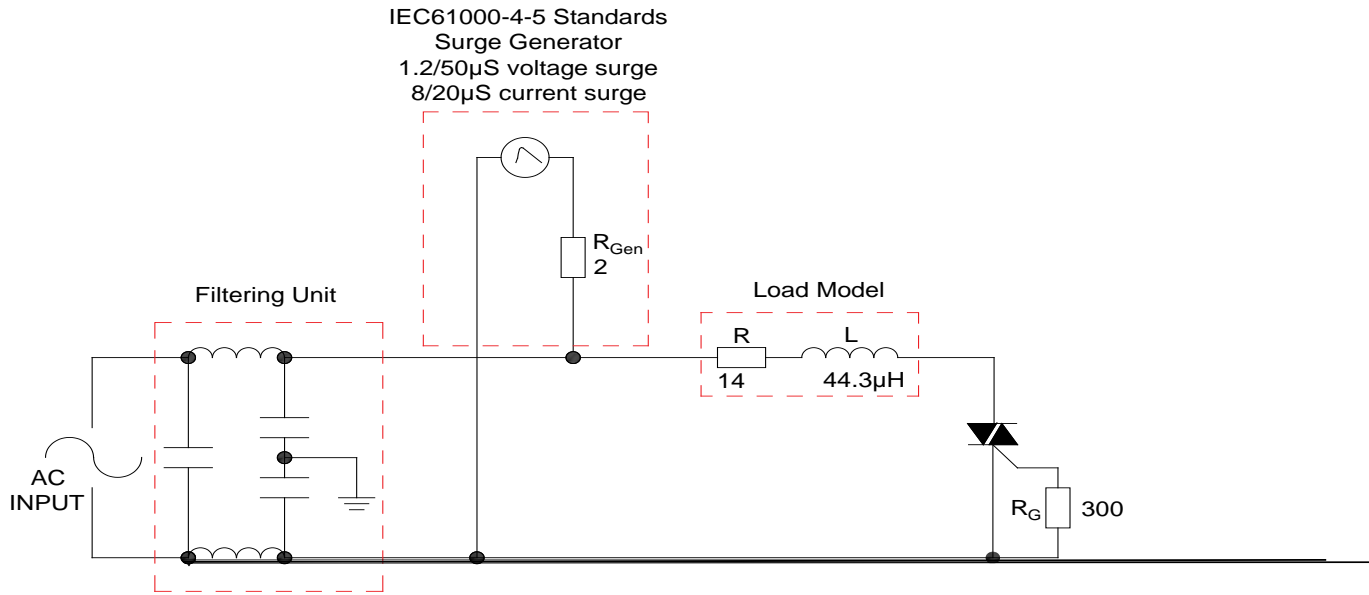


FIG.7 Test circuit for inductive and resistive loads to IEC-61000-4-5 standards



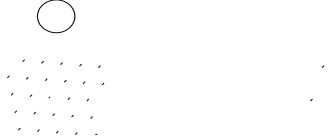
**ORDERING INFORMATION**

Order code	Voltage V <sub>DRM</sub> /V <sub>RRM</sub> (V)	IGT(nA )	Package	Base qty. (pcs)	Delivery mode
		H- I- J- K			
JST136C-800T	800	5	TO-220C	50	Tube

**Document Revision History**

Date	Revision	Changes
Apr.14, 2023	A.1.0	Last updated
Oct.16, 2025	A.1.1	Revise PACKAGE MECHANICAL DATA

PACKAGE MECHANICAL DATA



Information furnished in this document is believed to be accurate and reliable. However,  
Jiangsu JieJie Microelectronics Co.,