



JST134Q-600T 4A TRIAC

Rev.A.1.0

DESCRIPTION:

JST134Q-600T

TO-126

TO-126

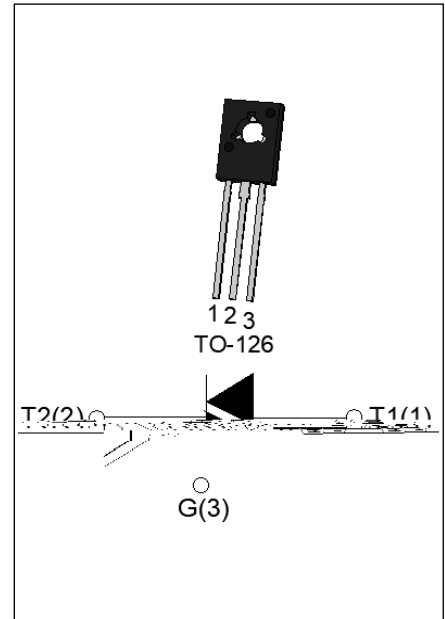
TO-126

TO-126

TO-126

TO-126

in



MAIN FEATURES

$I_{T(M)}$	4	A
$V_{BM} / V_{RM}$	600	V
$I_G$	5/5/5	A

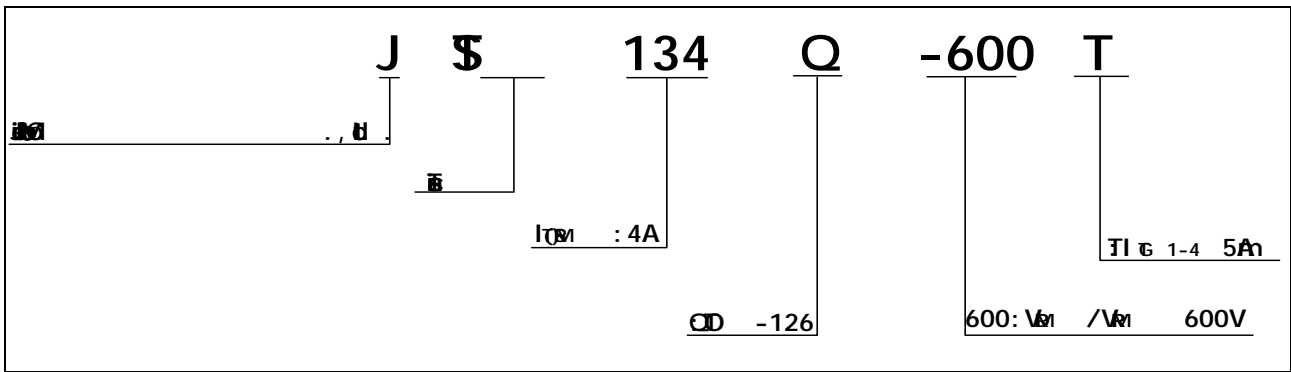
ABSOLUTE MAXIMUM RATINGS

Parameter	Symbol	Value	Unit
Storage Temperature	$T_S$	-40-150	
Junction Temperature	$T_j$	-40-125	
Reverse Voltage ( $V_{RM}$ )	$V_{RM}$	600	V
Forward Voltage ( $V_{FM}$ )	$V_{FM}$	600	V
Forward Current ( $I_{FM}$ )	$I_{FM}$	4	A
Surge Current ( $I_{SM}$ )	$I_{SM}$	25	A
Surge Current ( $I_{SM}$ )	$I_{SM}$	27.5	A
Surge Energy ( $I^2t$ )	$I^2t$	3.125	A <sup>2</sup> s
Non-repetitive Surge Current ( $I_{NSM}$ )	$I_{NSM}$	30	A
Non-repetitive Surge Current ( $I_{NSM}$ )	$I_{NSM}$	20	A
Surge Current ( $I_{SM}$ )	$I_{SM}$	2	A
Surge Power ( $P_{SM}$ )	$P_{SM}$	0.5	W
Surge Power ( $P_{SM}$ )	$P_{SM}$	5	W
Peak Voltage ( $V_p$ )	$V_p$	2.5	kV

ELECTRICAL CHARACTERISTICS 25

Symbol	Test Condition	Quadrant	Value		Unit
$I_G$	$V_D = 12V$ $R_L = 33k$	A	M	5	A
$V_G$		A	M	1	V
$V_D$	$V_D = 10V$ $R_L = 1k$ $T_j = 25^\circ C$	AL	M	0.2	V
$I_L$	$I_G = 1.2A$	- -	M	9	A
				13	
$I_H$	$I_G = 10A$	1	M	5	A

ORDERING INFORMATION



MARKING



000000

---



FIG.1:   
a 

FIG.2:  -   
b 

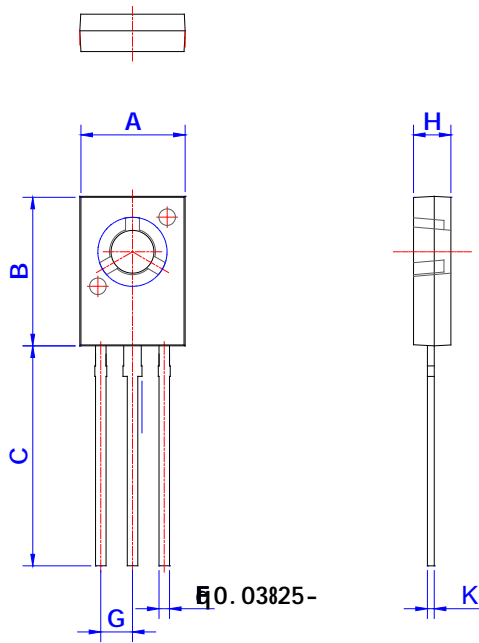


## ORDERING INFORMATION

Order code	Voltage $V_{DRM}/V_{RRM}$ (V)	IGT(mA)	Package	Base qty. (pcs)	Delivery mode
		H- I- J- K			
<b>JST134Q-600T</b>	<b>600</b>	<b>5</b>	<b>TO-126</b>	<b>500</b>	<b>Bulk Pack</b>

**Document Revision History**

PACKAGE MECHANICAL DATA



R	B					
	M			b		
	M	$\bar{p}$	M	M	$\bar{p}$	M
A	7.40		7.80	0.291		0.307
B	10.6		11.2	0.417		0.441
C	15.3		16.3	0.602		0.642
D	3.90		4.10	0.154		0.161
E	1.17		1.47	0.046		0.058
F	0.66		0.86	0.026		0.034
G	2.15			0.085		
H	2.50		2.90	0.098		0.114
J	1.10		1.50	0.043		0.059
K	0.45		0.60	0.018		0.024

