



JST134C-800D 4A TRIAC

Rev.A.1.1

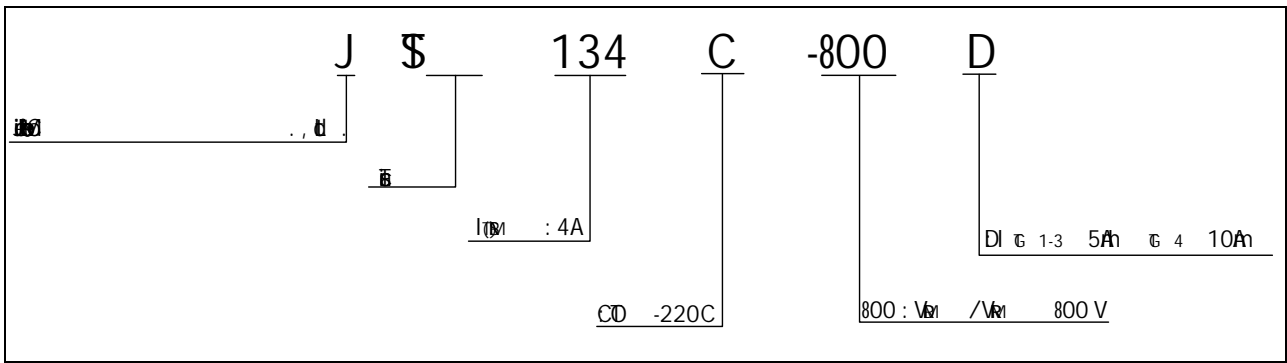
DESCRIPTION:

Ⓜ Ⓝ34C -800 D

ELECTRICAL CHARACTERISTICS

Symbol	Test Condition	Quadrant	Value		Unit
I_G	$V_D=12V$ $R_L=33$	- -	M .	5	A
				10	
V_G		A	M .	1	V
V_D	$V_D=V_M$ $T_j=125$ $R_L=3.3k$	A	M .	0.2	V
I_L	$I_G=1.2I_G$	- -	M .	10	A
				20	

ORDERING INFORMATION



MARKING

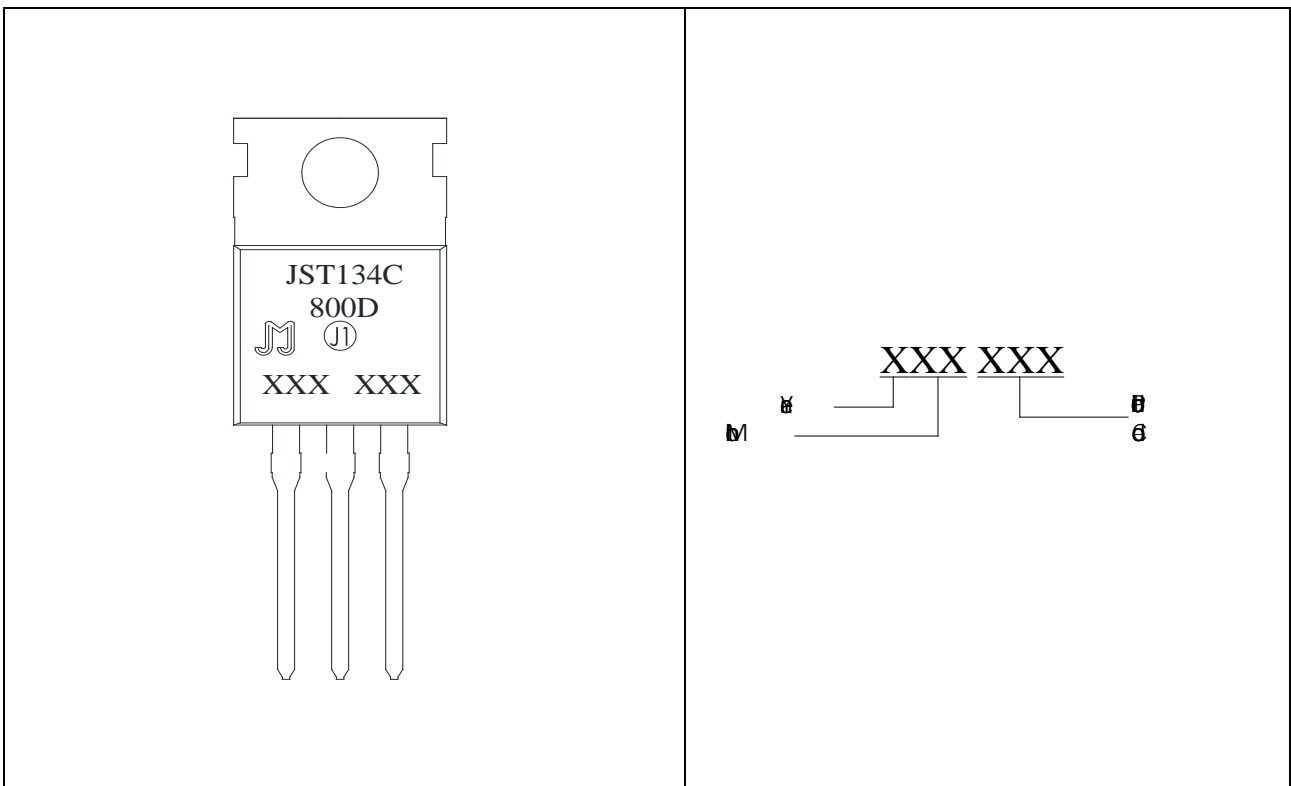






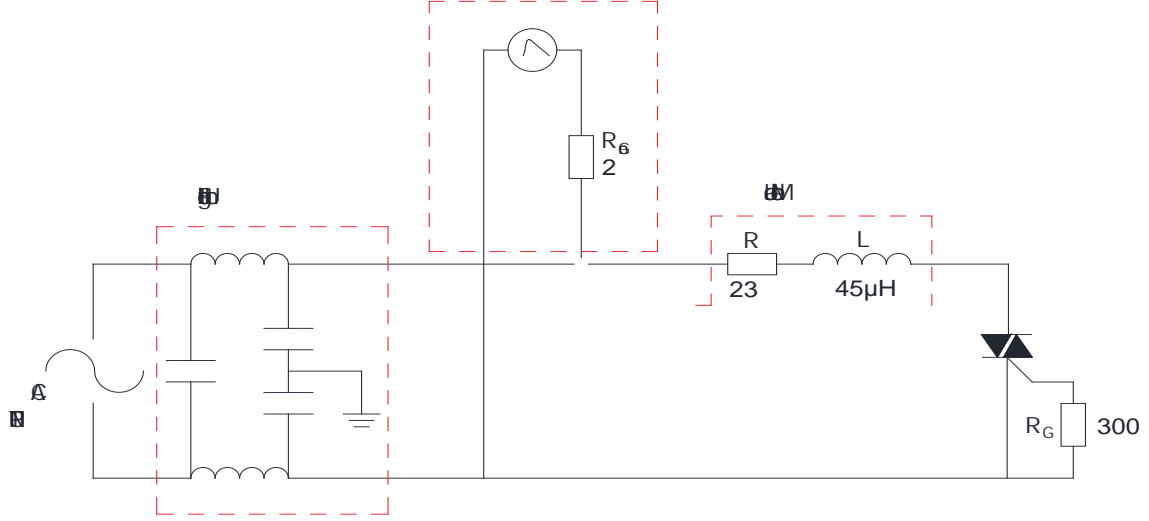
FIG.1: 


FIG.2:  - 


61000-4-5

R

1.2/50 μ S voltage surge
8/20 μ S current surge



PACKAGE MECHANICAL DATA

