



7KH -67) %: WULDF LV VXLWDEOH IRU JHQHUDO SXUSRVL
 VZLWFKLQJ ,W FDQ 1E2) XMHG VLVROQLQ DSSOLFDFWLRQV
 VXFK DV KHDWLQJ UHLJRODPVFRU VWDUFLQJ FLUFXLWV
 SKDVH FRQWURO RSHKUDVGLRPHUV PRUWRU VSHHG FRQWURO
 -67) %: VQXEEHUOHVV WULDF LV HVSHFLDOO\ UHFRPPHO
 XVH RQ LQGXFWLQJ ORDIG[VH%QDLSODVWLF SDFNDJH
 -67) %: SURYLGHV D UDWHG LQVXODWLRQ YROWDJH RI
 9506 FRPSO\LQJ ZLWK 8/ VWDQGDUGV)LOH UHI ()
 3DFNDJH 72) LV 5R+6 FRPSOLDQW

Parameter	Symbol	Value	Unit
6 WRUDJH MXSHFWLVRQWHPDQJHVWJ		7	
2 SHUDWLQJWHKPSHWLDROXUH	UDQJH	7	W

3 HDN JDWH SRZHU	3*0		:
3 HDN SXOVH YROWDJH 7M QRQ UHSHWLWLYH RII VVDWH), *	9SS		

7M XQOHVV RWKHUZZLVH VSHFLILHG

Symbol	Test Condition	Quadrant	Value	Unit
,*7	9' 9 5		0\$;	P\$
9*7			0\$;	9
9*	9' 9'50 7M 5/ N		0, 1	9
/	,* ;7		0\$;	P\$
,+		,7 P\$	0\$;	P\$
G9 GW' 99 *DWH 2SHQ 7			0, 1	9 V
G, GW F G9 GW F 9 V			7 0, 1	\$ PV
WQ	,* P\$ \$, P\$ 5, P\$ 7M		7 < 3	V
W11				

Symbol	Parameter	Value(MAX.)	Unit
970	70 \$ \$W V	7	
972	7KUHVKROG YRQWDJH	7	
5'	'\QDPLF UHVLVMDQFH	7	P
,50	9' 9'50 \$ 9550	7M	
,550		7M	

Symbol	Parameter	Value	Unit
5WK M F	MXQFWLRQ WR FDVH \$ &		:
5WK M D	MXQFWLRQ WR DPELHQW \$ &		:

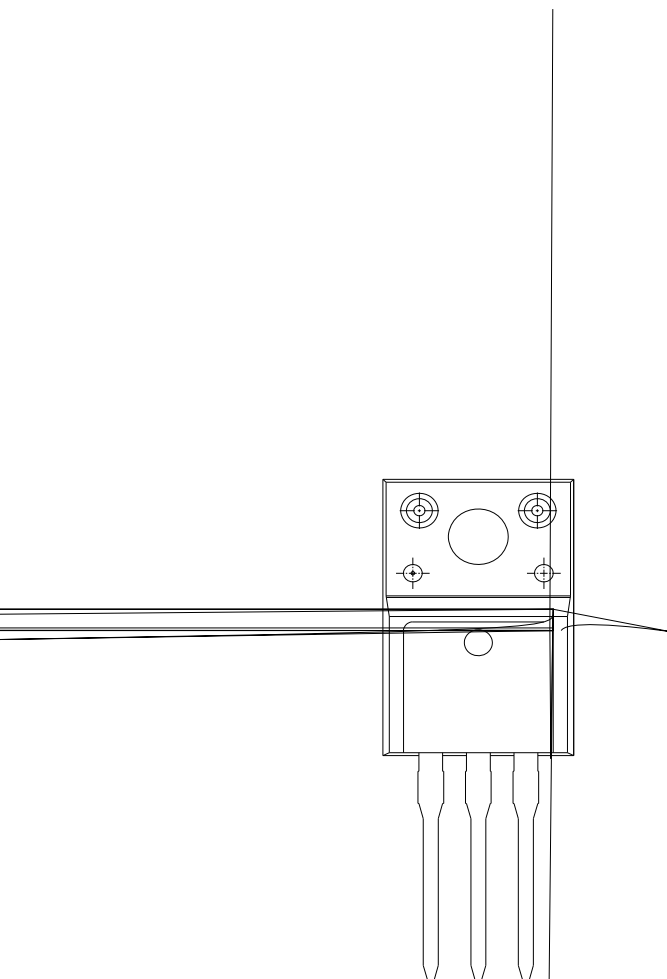
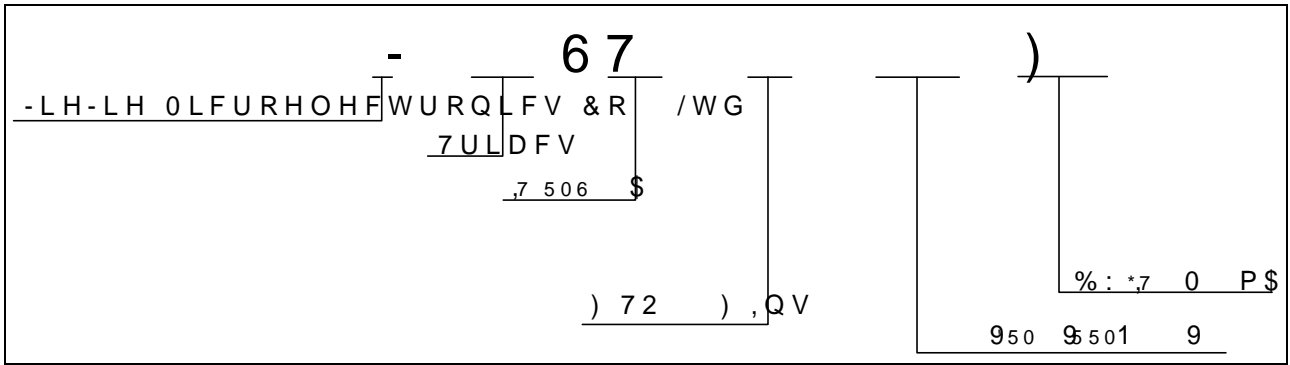
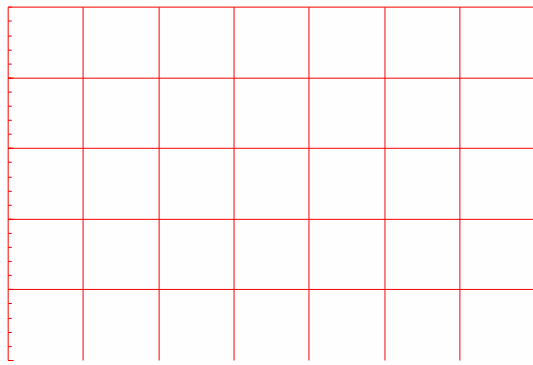
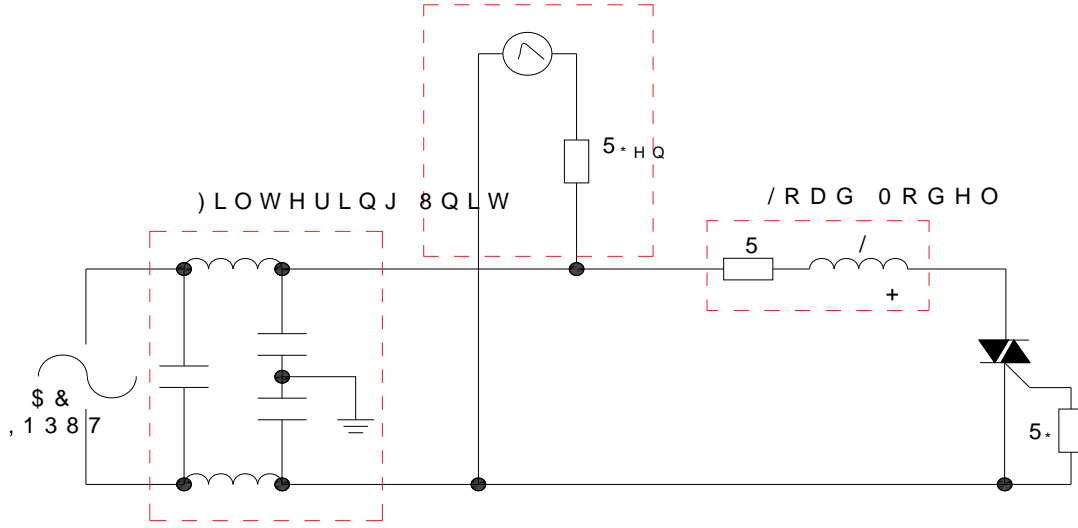


FIG.1: 0D[LPXP SRZHU GLVVLSDWLRQ YFIG.2: V5X06 5RQ VWDWH FXUUHQW YH
RQ VWDWH FXUUHQW WHPHUDWXUH



), * Ö7HVW FLUFXLW IRU LQGXFWLYH DQG UMDQGDUGV OR

, (& 6WDQGDUGV
 6XUJH *HQHUDWRU
 6YROWDJH VXUJH
 6FXUUHQW VXUJH



5HIHU WR WKH DSSOLFDWLRQ QRWHW \$UWHPE O K U RW K X RW LR Q D FNR DJ FK W
 D] œ} o šœ}v] •X

Order code	Voltage V _{DRM} /V _{RRM} (V)	IGT(mA)	Package	Base qty. (pcs)	Delivery mode
		- -			
JST12F-600BW	600	50	TO-220F(Ins)	50	Tube

Document Revision History

'DWH	5HYLVLRQ	&KDQJHV
\$SU	\$	/DVW XSGDWHG
2FW	\$	5HYLVLRQ \$*(0(&+\$1,&\$/'\$7\$

,QIRUPDWLRQ IXUQXPHQW LQ WKOLHYMB DQGEWHDFDXUDH +
-LDQJVX -LH-LH 0L&RRHOWHG WDRVQLFHVQLRWUHRUSRQVLEBRQVH
RI XVH ZLWKRXW FRQVLGHUDWLRQ IRU VXFK LQIRUPDWLRQ