



W O W A R

R A 1

DESCRIPTION:

1.  $V_{DS} = -10V$   $I_{DQ} = 0$   
 2.  $V_{GS} = 0V$   
 3.  $V_{GS} = 0V$   
 4.  $V_{GS} = 0V$   $I_{DQ} = 0$   $s_b = 0$   
 5.  $V_{GS} = 0V$   $P_{DQ} = 0$   
 6.  $V_{GS} = -2V$   $I_{DQ} = 0$

MAIN FEATURES

ABSOLUTE MAXIMUM RATINGS

Symbol	Parameter	Value	Unit
$T_{stg}$	Storage Temperature	-40 to 150	°C
$T_j$	Junction Temperature	-40 to 150	°C
$V_{DS}$	Drain-Source Voltage (at $I_{DQ} = 0$ )	80	V
$V_{GS}$	Gate-Source Voltage (at $I_{DQ} = 0$ )	80	V
$I_{DM}$	Maximum Drain Current (at $V_{GS} = 0V$ )	1	A
$I_{SM}$	Maximum Surge Drain Current (at $V_{GS} = 0V$ )	2	A

$(j_2 ; 0 - \phi - \delta - 8)$	$V_p$	4	$k$
---------------------------------	-------	---	-----

ELECTRICAL CHARACTERISTICS

$\phi$	$\delta$	$\theta$	$\psi$		$\eta$
$I_G$	$V_D \text{ L } 3$	- -	$M .$	5	$A_n$
$V_G$		- -	$M .$	1	V
$V_D$	$V_D \text{ } \psi \text{ } M \text{ } T_j \text{ } \delta$ $R_L \text{ } 3 \text{ } k$				

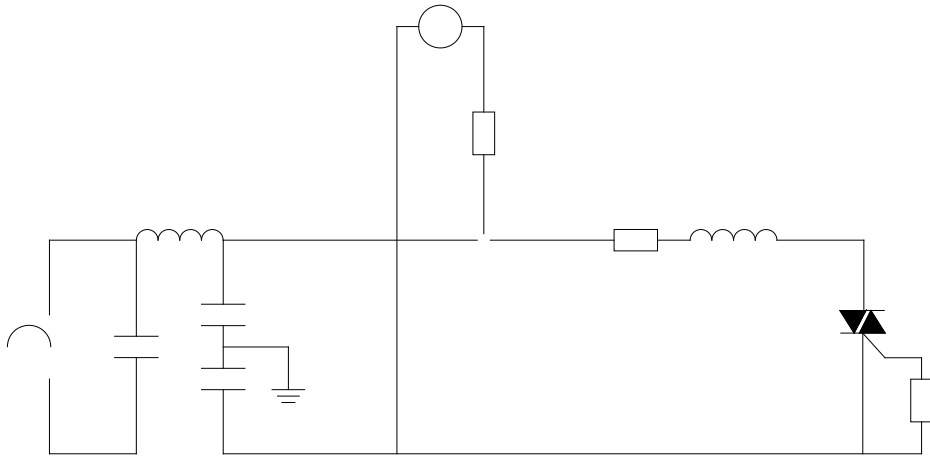


6 : M  
0 0

0 M +  
0

\_\_\_\_\_  
\_\_\_\_\_  
\_\_\_\_\_

B  
g  
h

ORDERING INFORMATION

①	V <sub>BI</sub> V <sub>RI</sub> V	② (A)	③	④	⑤
		H-I-J			
\$ W 80 W	80	5	⑥ -2 -2	40	⑦

## PACKAGE MECHANICAL DATA

