



JST04K-1000SW 4A TRIAC

Rev. A.1.1

**DESCRIPTION:**

The JST04K-1000SW triac is suitable for general purpose AC switching. It can be used as an ON/OFF function in applications such as heating regulation, induction motor starting circuits, for phase control operation in light dimmers, motor speed controller.

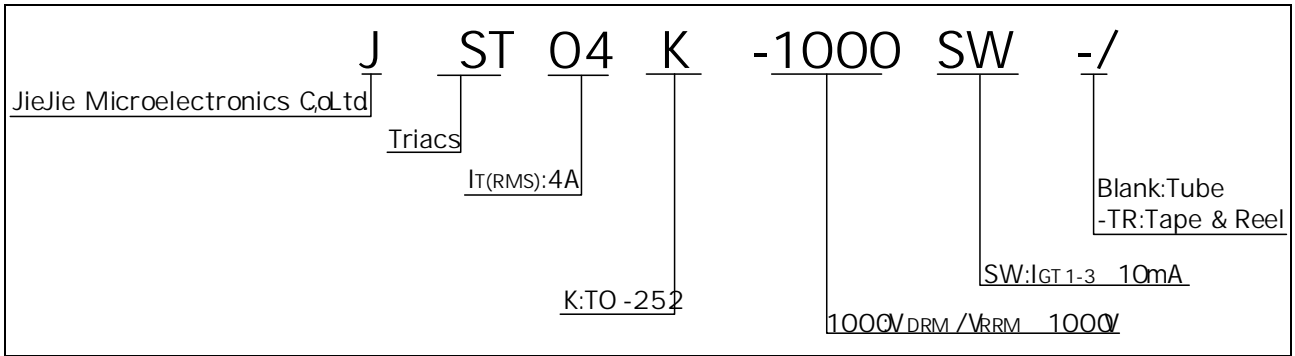
JST04K-1000SW  
snubberless  $t_d \leq 5\mu s$   $[I_{T1}]/I_{T2} \leq 231/28$   $T_c = -25.6 \sim 100^\circ C$   $U_{T1} = 25.6V$   $T_c = -0.002 \sim 1.24$   $0.34 \sim 5.2$

Peak pulse voltage ( $T_j=25^\circ\text{C}$ ; non-repetitive, off-state; FIG.8)	$V_{pp}$	3	kV
--	----------	---	----

**ELECTRICAL CHARACTERISTICS** (unless otherwise specified)

Symbol	Test Condition	Quadrant	Value	Unit
--------	----------------	----------	-------	------

ORDERING INFORMATION



MARKING

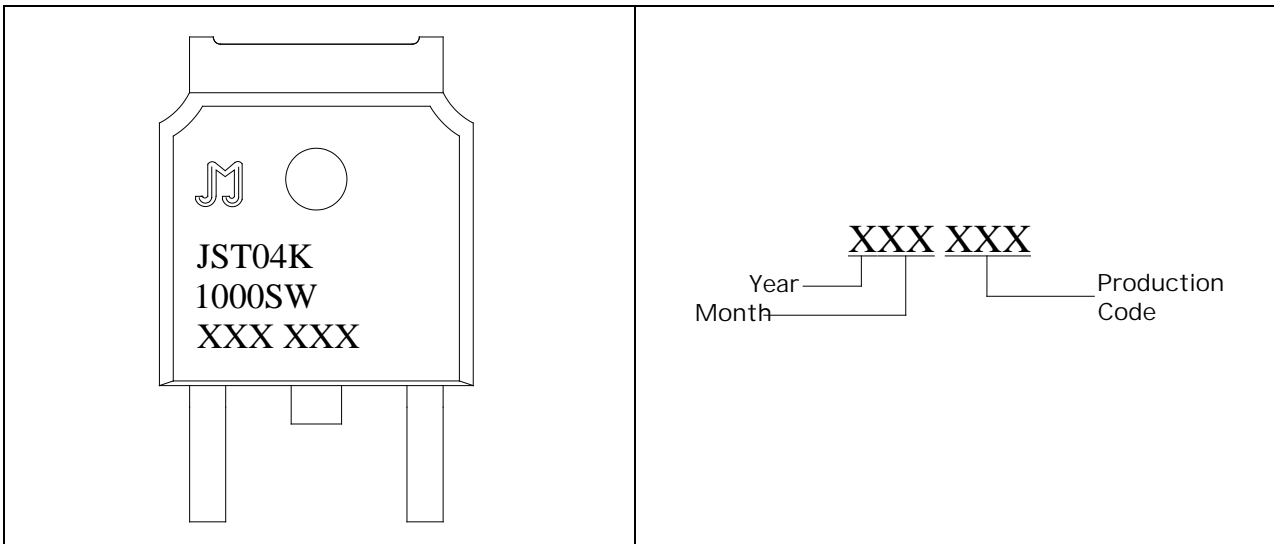




FIG.7: Relative variations of gate trigger current, holding current and latching current versus junction temperature

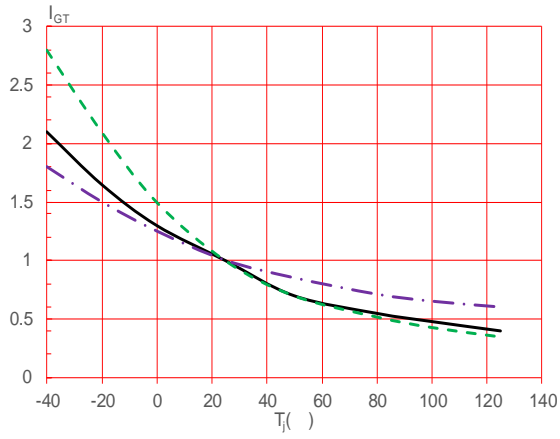
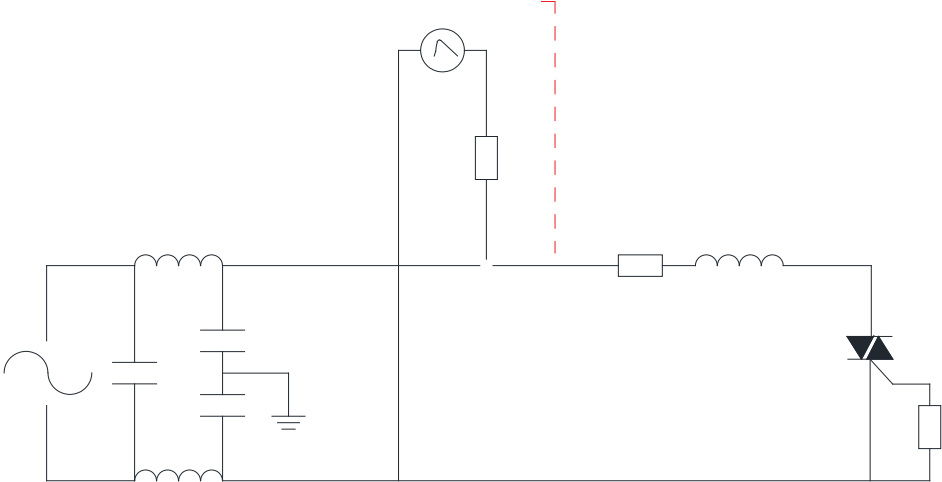


FIG.8 Test circuit for inductive and resistive loads to 100-5 standards



ORDERING INFORMATION

Order code	Voltage $V_{DRM}/V_{RRM}$ (V)	IGT (mA)	Package	Base qty. (pcs)	Delivery mode
		- -			
JST04K-1000SW	1000	10	TO-252	80	Tube
JST04K-1000SWTR				2,500	Tape & Reel



JST04K-1000SW

 Jie Jie Microelectronics Co., Ltd.

DELIV EE42 Tc17 (.c)-1.3.7cLIV 0 Td ( )Tj 0.6>Tj9007 Tc 0.007/MCID84./InlineSha>>B

