



T2535H-8A 25A TRIAC

Rev.A.1.1

DESCRIPTION:

1. 符合IEC 60747-6-2标准
 2. 符合UL 1812标准
 3. 符合VDE 0884标准
 4. 符合GB 19830标准
 5. 符合RoHS标准
 6. 符合REACH标准
 7. 符合ISO 9001标准
 8. 符合ISO 14001标准
 9. 符合ISO 45001标准
 10. 符合GB 2818标准

MAIN FEATURES

ABSOLUTE MAXIMUM RATINGS

Parameter	Symbol	Value	Unit
结温	T_j	-40-150	
存储温度	T_s	-40-150	
正向峰值电压 ($I_T = 0$)	V_{FM}	80	V
正向峰值电压 ($I_T = 25A$)	V_{FM}	80	V
正向峰值电流 ($V_{FM} = 0$)	I_{FM}	25	A

θ_{JA}	(θ_{JA})	P_{max}	1	W
P_{tot}		P_{tot}	10	W

T2535H-8A

 JieJie Microelectronics Co., Ltd.

ORDERING INF-.2s76.49 (.cA)86 (wwT3.7 (.cG)-5 ON-4.3 (d)]TJ 0 Tc 0 Td Do (/InI






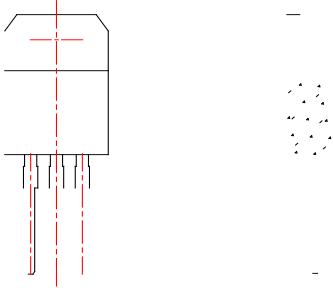
FIG.1: 
a 

FIG.2:  - 
b 

JieJie M

PACKAGE MECHANICAL DATA



© 2014 JieJie Microelectronics Co., Ltd.
All rights reserved.
No part of this document may be reproduced, stored in a retrieval system, or transmitted, in any form or by any means, without the prior written permission of JieJie Microelectronics Co., Ltd.