



T0650H-8E 6A TRIAC

Rev.A.1.1

The T0650H-8E triac is suitable for general purpose AC switching. It can be used as an ON/OFF function in applications such as heating regulation, induction motor starting circuits, for phase control operation in light dimmers, motor speed controllers. Compared to traditional thyristors (T02m)7 (par)7 (ed10 16 >>BDC,)-4 (.)-2

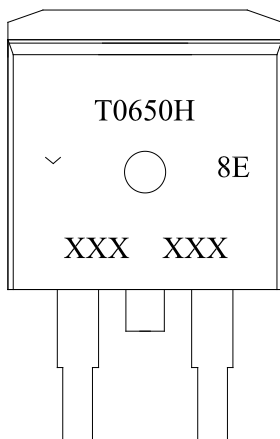
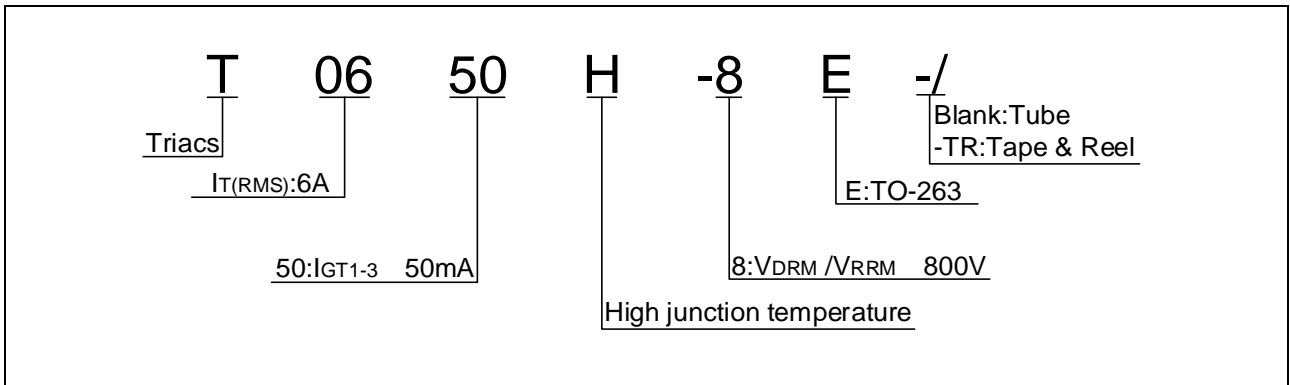


FIG.1: Maximum power dissipation versus RMS on-state current

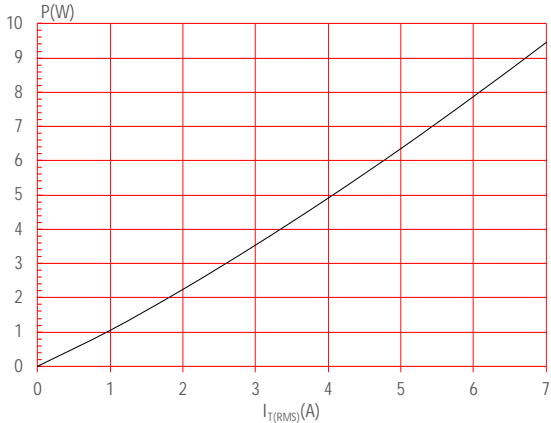


FIG.2: RMS on-state current versus case temperature

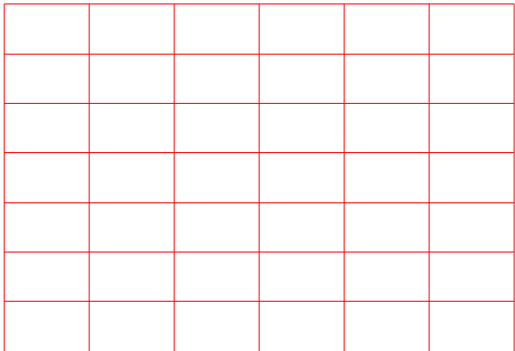
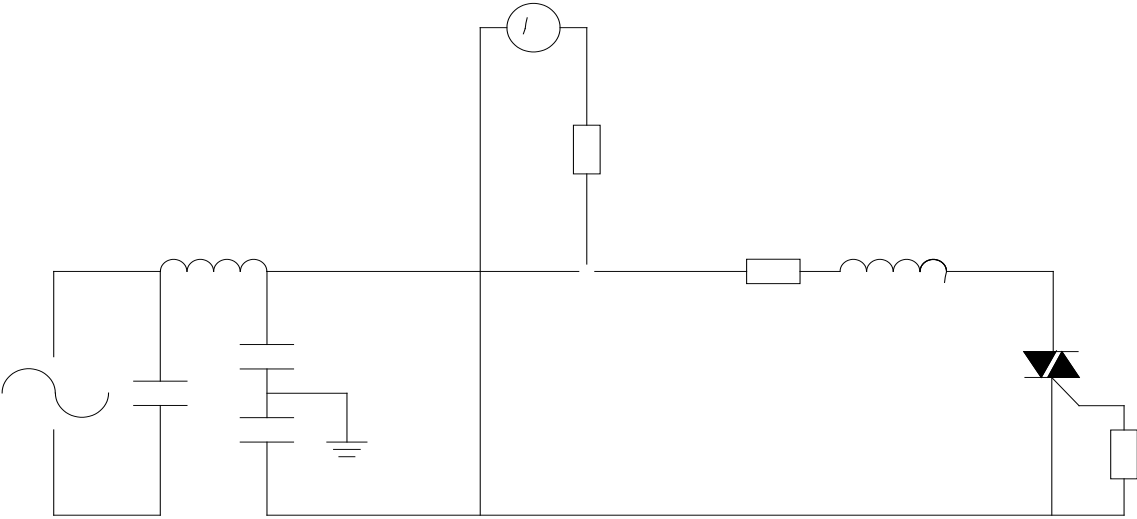


FIG.7: Relative variations of gate trigger current, holding current and latching current versus junction temperature



FIG.8 Test circuit for inductive and resistive loads to IEC-61000-4-5 standards





Information furnished in this document is believed to be accurate and reliable. However,