



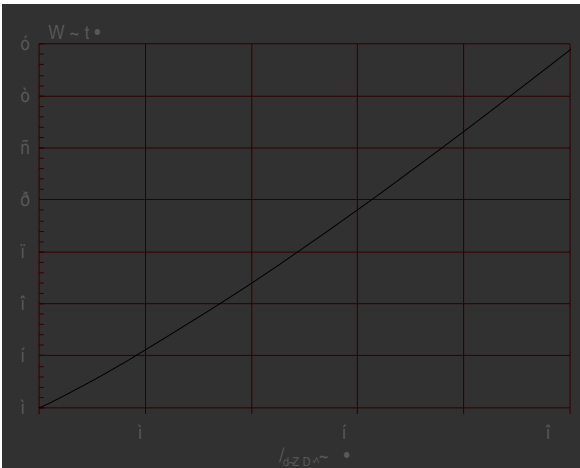
The T0420H-8F triac is suitable for general purpose AC switching. It can be used as an ON/OFF function in applications such as heating r



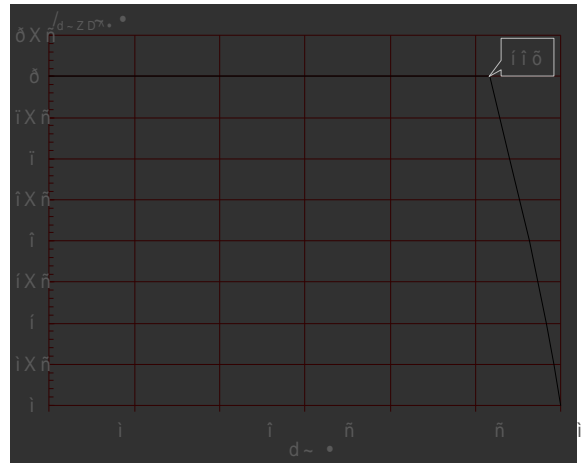
Average gate power dissipation ($T_j=1-$



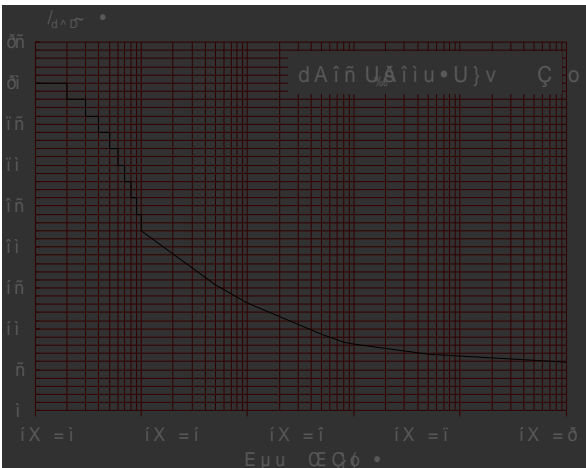
Maximum power dissipation versus RMS on-state current



RMS on-state current versus case temperature



Surge peak on-state current versus number of cycles



On-state characteristics

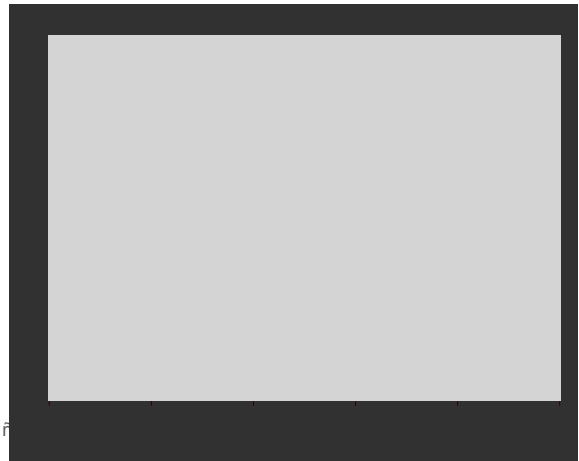
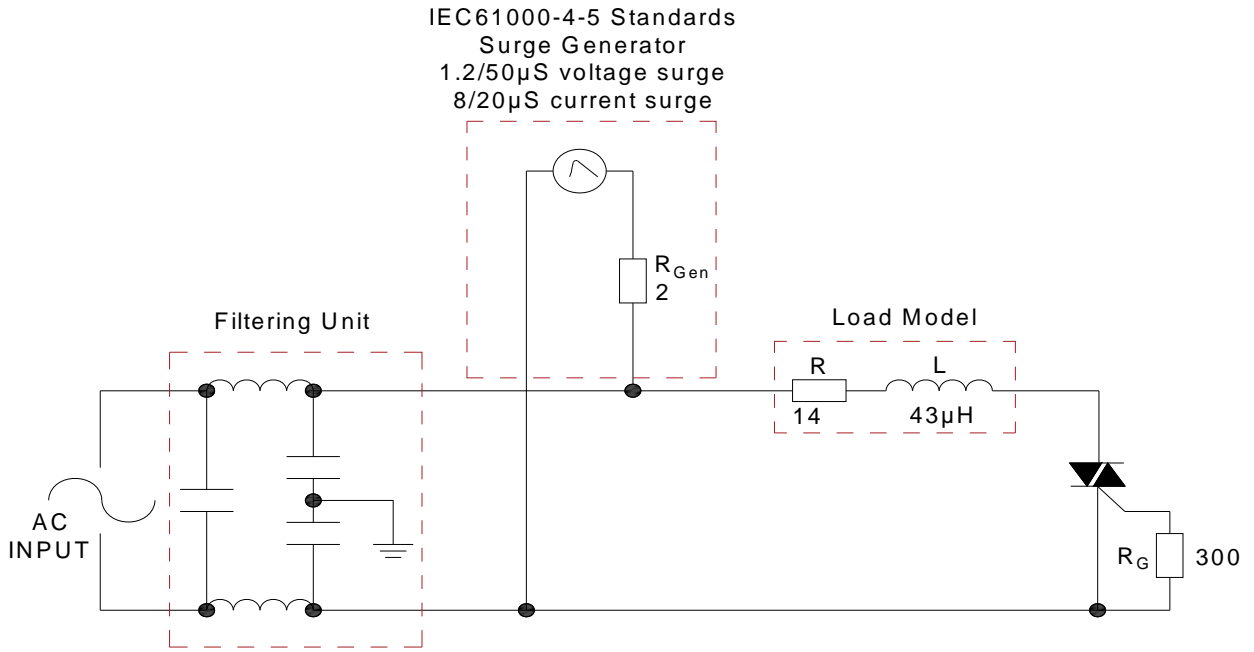




FIG.7 Test circuit for inductive and resistive loads to IEC-61000-4-5 standards



Refer to the application note "Assembly Instructions for Thyristors in Through-hole Package" released by JieJie D] Œ} o š Œ} v] • X



Date	Revision	Changes
Apr.10, 2023	A.1.0	Last updated
Oct.10, 2025	A.1.1	Revise PACKAGE MECHANICAL DATA



Information furnished in this document is believed to be accurate and reliable. However, Jiangsu JieJie Microelectronics Co., Ltd. assumes no responsibility for the consequences of use without consideration for such information nor use beyond it. Information mentioned in this document is subject to change without notice, apart from that when an agreement is signed, Jiangsu JieJie complies with the agreement.

Products and information provided in this document have no infringement of patents. Jiangsu JieJie assumes no responsibility for any infringement of other rights of third parties which may result from the use of the products and information in this document and any