

$P_{G(AV)}$	($T_j = 50^\circ C$)	1	W
P_{GM}		20	W
V_p		0.5	V

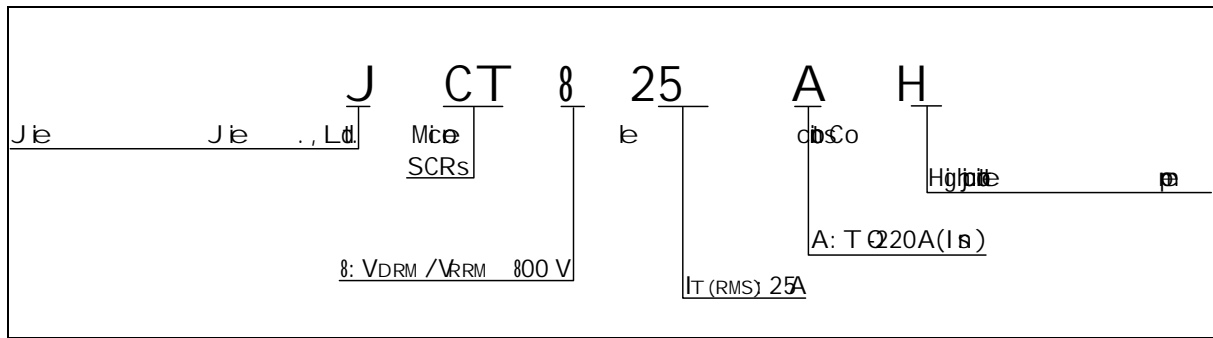
ELECTRICAL CHARACTERISTICS

Sym	Test Condition	Value			Unit
		MIN.	TYP.	MAX.	
I_{GT}	$V_D = 540V, L = 10\mu H$	-	-	20	A
V_{GT}		-	-	1	V
V_{GD}	$V_D = 540V, T_j = 50^\circ C, R_L = 1k\Omega$	0.2	-	-	V
I_L	$I_G = 1.2 I_{GT}$	-	-	70	A
I_H	$I_T = 500mA$	-	-	60	A
dV/dt	$V_D = 540V, I_G = 1.2 I_{GT}, T_j = 125^\circ C$	800	-	-	V/ μs
	$V_D = 540V, I_G = 1.5 I_{GT}, T_j = 150^\circ C$	500	-	-	
t_b	$I_G = 0A, I_A = 0A, I_R = 0A, T_j = 50^\circ C$	-	2	-	μs
t_b		-	50	-	

STATIC CHARACTERISTICS

Sym	Test Condition	Value	Unit
V_{TM}	$I_{TM} = 50A, t_p = 380\mu s, T_j = 50^\circ C$	1.5	V
V_{TO}	$T_j = 50^\circ C$	0.7	V
R_D	$T_j = 50^\circ C, TO$		

ORDERING INFORMATION



MARKING

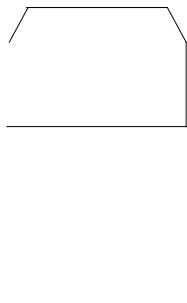


FIG.1: Main
RMS d - 8e

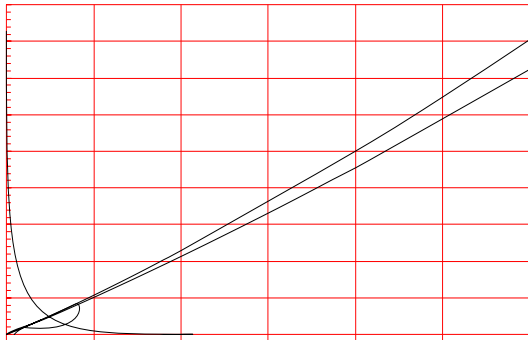
rdp
ce

ti

FIG.2: RMS d - 8e
e p

ce
ate

te

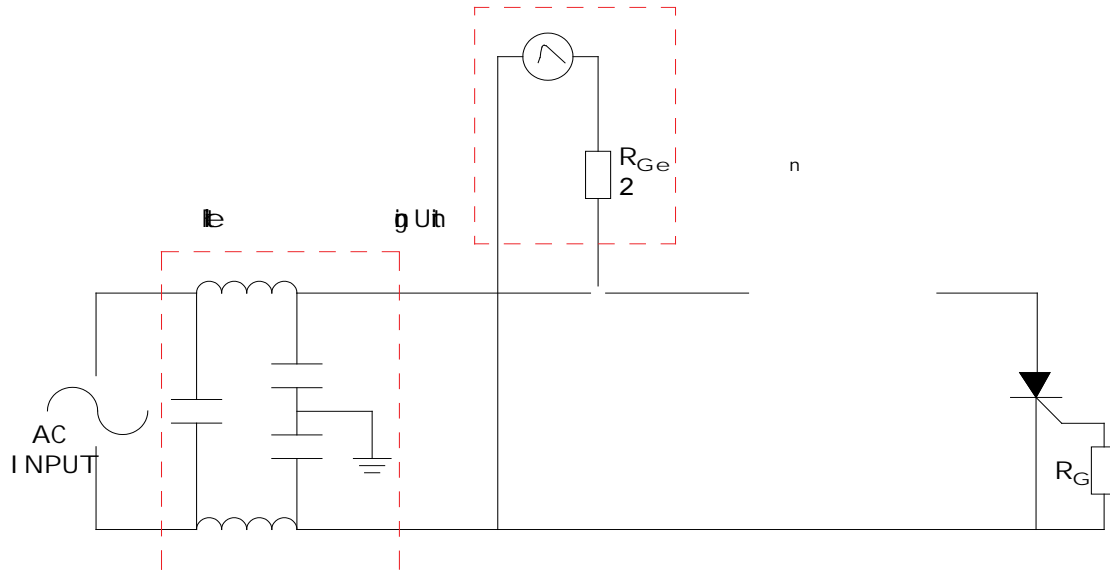


IEC61000-4-5 Sads

Sge Ge e ab

1.2/50 μ S voltage surge

8/20 μ S current surge




ORDERING INFORMATION

Order	V _{DRM} /V _{RRM} (V)	IGT(μs)	Package	Base (p)	Device
JCT825AH	800	20	TO-220A(18)	50	Tub

e

Do Revision History

Date	Revision	Changes
Jun.15, 2023	A.1. 0	Initial
Oct. 11, 2025	A.1. 1	Re PACKAGING MECHANICAL DATA

I have d... the e... d...
 How e... r... Ltd. as... Me...
 ce... ne... se...
 I have d... ct...
 the... range... e... d, J...
 Post... d... the...
 J... J... as...
 pie... ay... in... sh... ad... Th...
 dom... e... de... d...
... ge... e... d... Co, Ltd. ...
 Copyright © 2025 J... J... Ltd. All...