



JCT1275CS 75A SCR

RevA.1.1

DESCRIPTION:

With high ability to withstand the shock loading of large current, JCT1275CS SCR provides high dV/dt rate with strong resistance to electromagnetic interference. It is especially recommended for use on solid state relay, UPS, SVC, power charger, T-tools etc. Package TO-247S is RoHS compliant.

MAIN FEATURES

| Symbol | Value | Unit |
|-------------------|-------|------|
| $I_{T(RMS)}$ | 75 | A |
| V_{DRM}/V_{RRM} | 1200 | V |
| I_{GT} | 10-80 | mA |

ABSOLUTE MAXIMUM RATINGS

| Parameter | Symbol | Value | Unit |
|--|-----------|---------|--------|
| Storage junction temperature range | T_{stg} | -40-150 | |
| Operating junction temperature range | T_j | -40-125 | |
| Repetitive peak off-state voltage ($T_j=25^\circ C$) | V_{DRM} | 1200 | V |
| Repetitive peak reverse voltage ($T_j=25^\circ C$) | V_{RRM} | 1200 | V -RRM |



| | | | |
|--|-------------|----|---|
| Average gate power dissipation ($T_j=125$) | $P_{G(AV)}$ | 1 | W |
| Peak gate power | P_{GM} | 22 | W |
| Peak pulse voltage ($T_j=25$; non-repetitive,off-state;FIG.7) | V_{pp} | | |

JCT1275CS

 **Jie Jie Microelectronics Co., Ltd.**

ORDERING INFORMATION

FIG.1: Maximum power dissipation versus RMS on-state current

FIG.2: RMS on-state current versus case temperature /

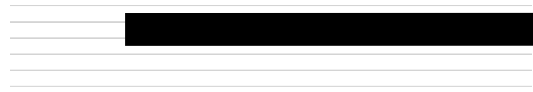
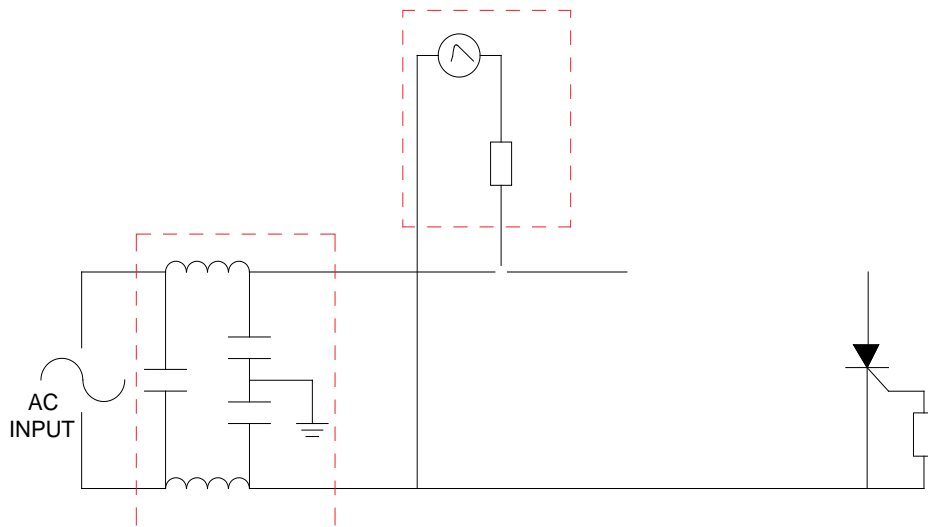


FIG.7 Test circuit for inductive and resistive loads to IEC-61000-4-5 standards.





ORDERING INFORMATION

| Order code | V _{ge} V _{DRM} /V _{RRM} (V) | IGT(A) | Package | Ball (p) | Delivery |
|------------|---|---------|---------|----------|----------|
| JCT1275CS | 1200 | 10-80 | TO-247S | 30 | Tb |

Do not Re is Hb

| Date | Revision | Changes |
|--------------|----------|--------------------------------|
| Apr.13, 2023 | A.1.0 | Last update |
| Oct.16, 2025 | A.1.1 | Revise PACKAGE MECHANICAL DATA |

JCT1275CS



Co., Ltd.

PACKAGE MECHANICAL DATA

