

JCT1240E

JieJie Microelectronics Co., Ltd.

ORDERING INFORMATION

| | | | | | |
|-----------------------------------|-----------|---------------------|-------------|----------|-------------------------------|
| J | CT | 12 | 40 | E | -/ |
| JieJie Microelectronics Co., Ltd. | SCRs | 12:VDRM /VRRM 1200V | IT(RMS):40A | E:TO-263 | Blank:Tube -TR:Tape & Reel |

MARKING

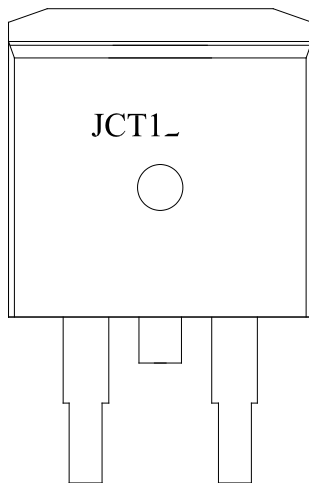


FIG.7: Relative variations of gate trigger current, holding current and latching current versus junction temperature

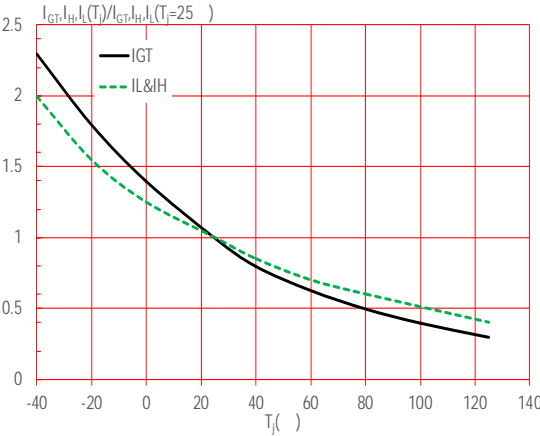
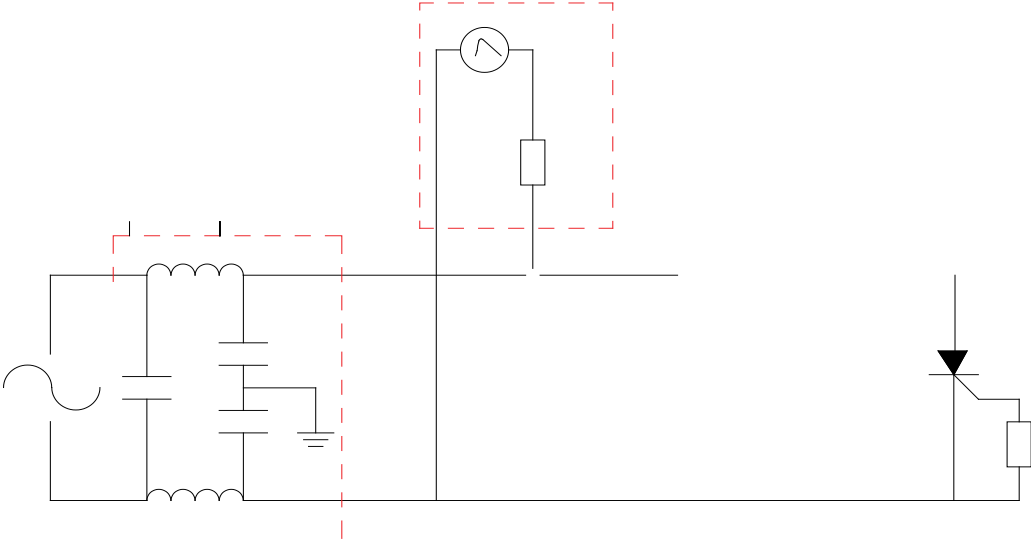
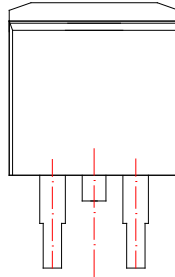
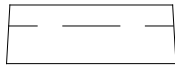


FIG.8 Test circuit for inductive and resistive loads to IEC-61000-4-5 standards.



PACKAGE MECHANICAL DATA



| Ref. | Dimensions | | | | | |
|------|-------------|------|-------|--------|------|-------|
| | Millimeters | | | Inches | | |
| | Min. | Typ. | Max. | Min. | Typ. | Max. |
| A | 9.90 | | 10.20 | 0.390 | | 0.402 |
| B | 14.70 | | 15.80 | 0.579 | | 0.622 |
| C | 9.40 | | 9.60 | 0.370 | | 0.378 |
| D | 2.40 | | | 0.094 | | |
| E | 1.20 | | 1.50 | 0.047 | | 0.059 |
| F | 0.75 | | 0.85 | 0.029 | | 0.033 |
| | | | | | | |
| | | | | | | |
| | | | | | | |
| | | | | | | |

DELIVERY MODE



