



Junction Temperature	T_j	135	
Storage Temperature	T_{stg}	-55~+125	
Soldering Temperature	T_{sol}	260	

: 100 μ s pulse, 100Hz frequency
 : AC for 1minute, R.H.=40~60%

(Temperature=25°C)

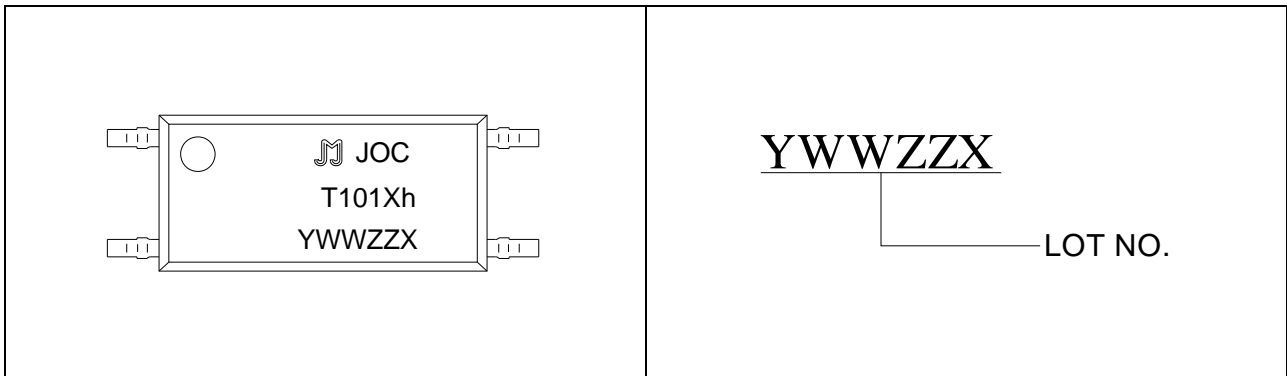
Input	Forward Voltage	V_F	$I_F=10mA$	-	1.2	1.5	V	
	Reverse Current	I_R	$V_R=6V$	-	-	1	μA	
	Terminal Capacitance	C_t	$V=0, f=1MHz$	-	30	250	pF	
	Collector-Emitter dark current	I_{CEO}	$V_{CE}=20V, I_F=0$	-	-	50	nA	
Output	Collector-Emitter breakdown voltage	BV_{CEO}	$I_C=0.1mA, I_F=0$	80	-	-	V	0 A
	Emitter-Collector breakdown voltage	BV_{ECO}	$I_E=0.1mA, I_F=0$	7	-	-	V	
	Current transfer ratio	CTR	$I_F=5mA, V_{CE}=5V$	80	-	600	%	

Transfer
 Characteristics



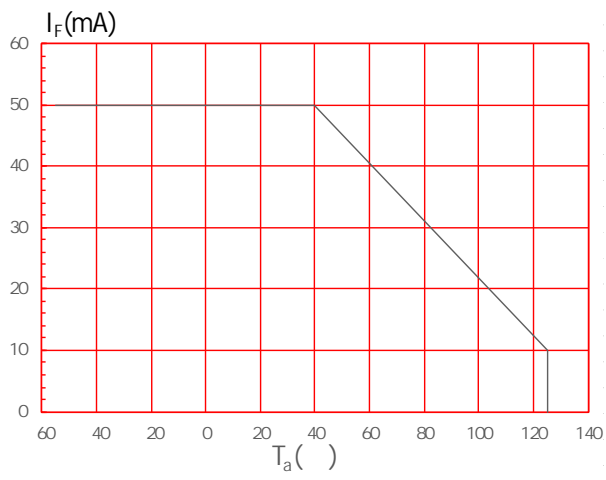
<u>J</u>	<u>OC</u>	<u>T</u>	<u>101</u>	<u>0</u>	<u>h</u>	<u>-L4</u>	<u>/</u>
JieJie Microelectronics Co., Ltd.	Opto Coupler	Transistor	Marketization Model	CTR Rank:0/6/7/8/9	h:Automotive grade	LSOP4	None:T1 R:T2

None/R	3000 Units/Reel

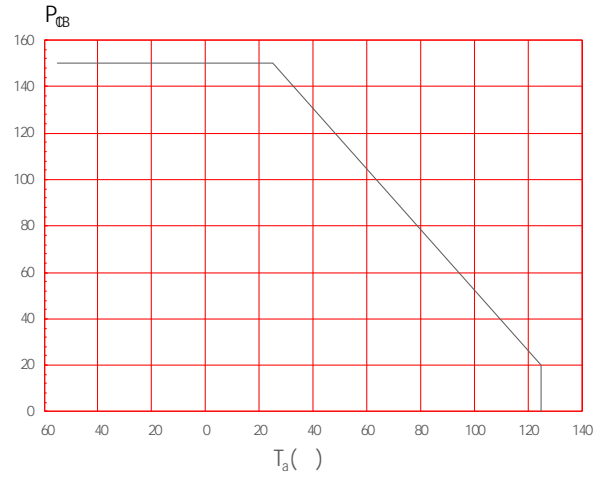




Max. Allowable LED Forward Current vs. Ambient Temperature

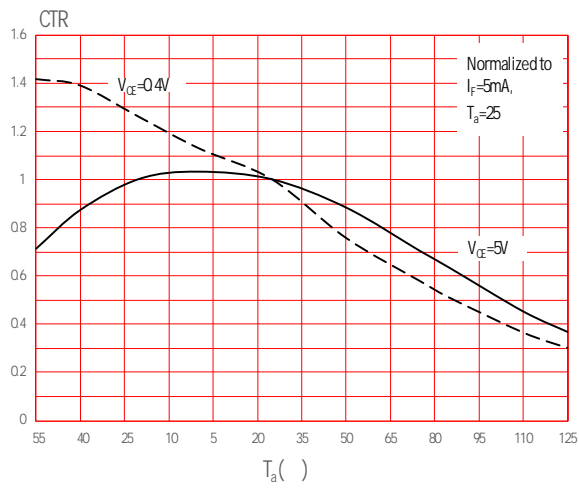


Collector Power Dissipation vs. Ambient Temperature

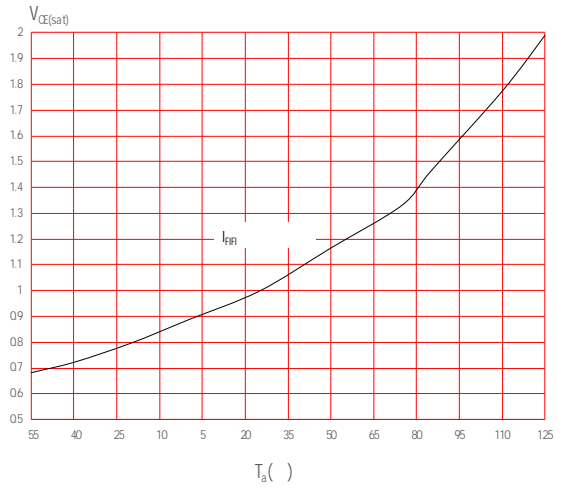




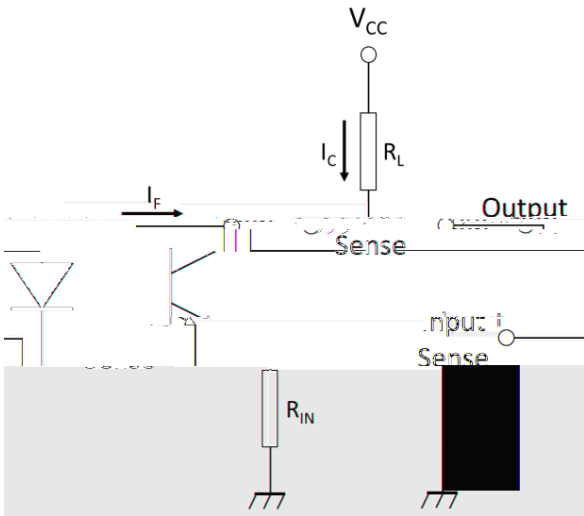
Normalized Current Transfer Ratio vs. Ambient Temperature



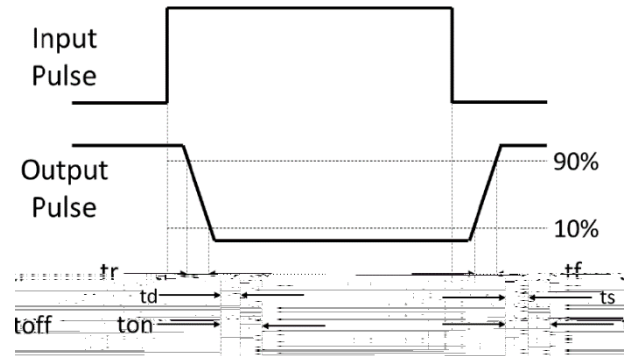
Normalized Collector-emitter Saturation Voltage vs. Ambient Temperature



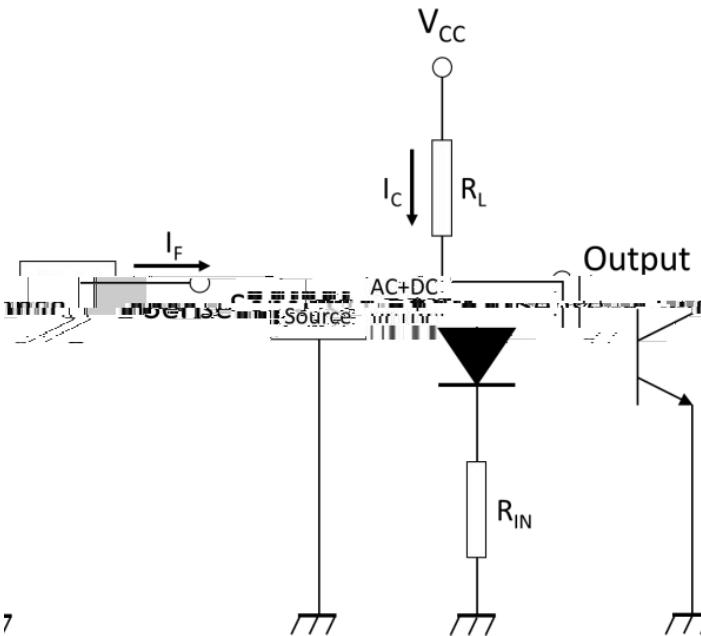
Test Circuits of Response Time



Curves of Response Time



Test Circuits of Frequency Response

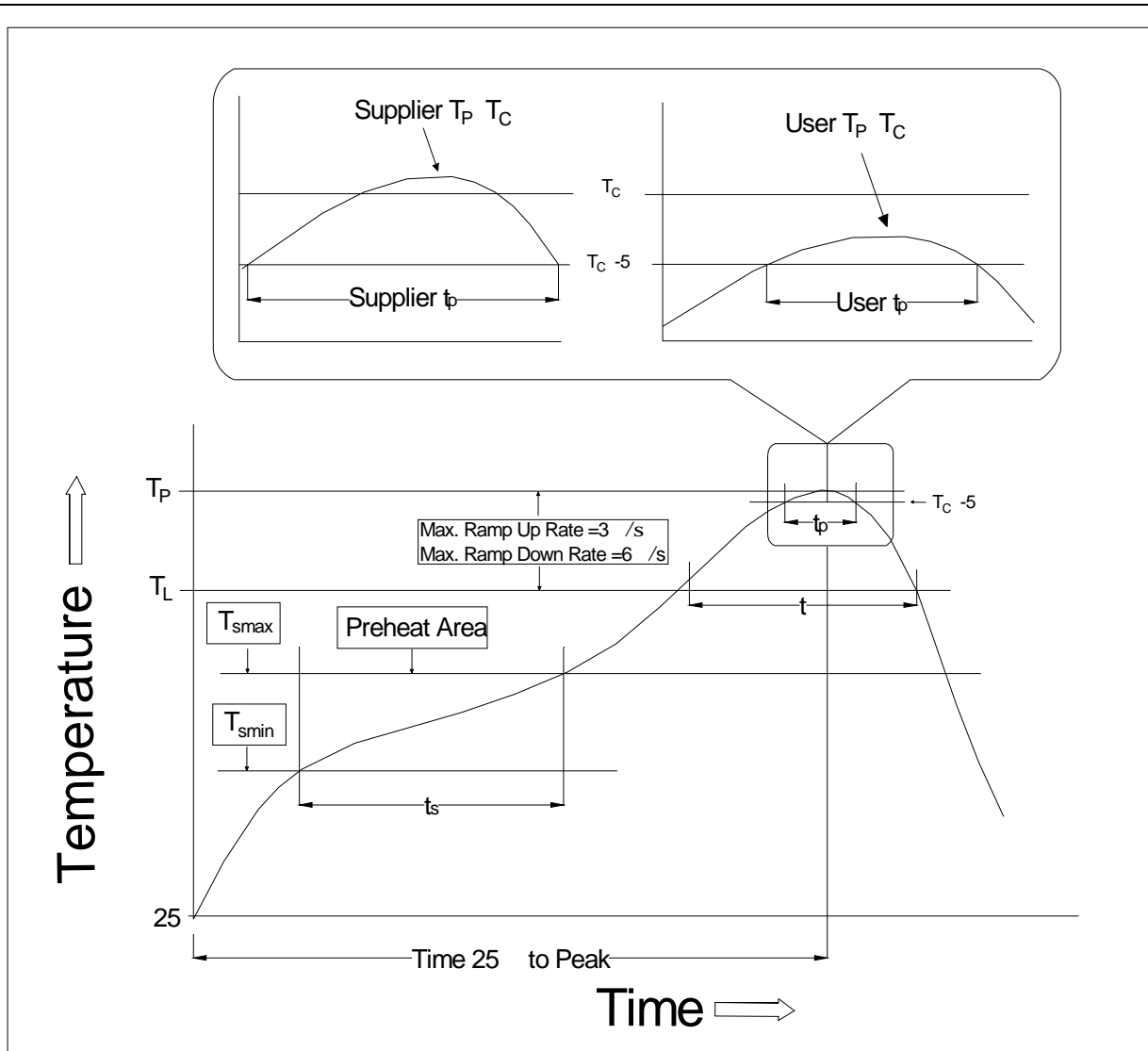


7



Ref.	Dimensions	
	Millimeters	Inches





Temperature Min. (T _{smin})	100	150
Temperature Max. (T _{smax})	150	200
Time (t _s) from (T _{smin} to T _{smax})	60-120 seconds	60-120 seconds
Ramp-up Rate (t _L to t _P)	3 °/second max.	3 °/second max.
Liquidus Temperature (T _L)	183	217
Time (t _L) Maintained Above (T _L)	60-150 seconds	60-150 seconds
Peak Body Package Temperature	235 +0 /-5	260 +0 /-5
Time (t _P) within 5 ° of 260	20 seconds	30 seconds
Ramp-down Rate (T _P to T _L)	6 °/second max.	6 °/second max.
Time 25 ° to Peak Temperature	6 minutes max.	8 minutes max.



Note:

1. Reflow soldering is recommended at the temperatures and times shown, no more than three times.