





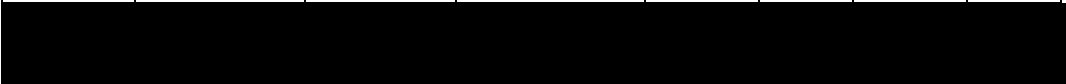
		8	

NOTE1  $\dot{I} \cdot \% \mu o \cdot U \dot{I} \dot{I}, \dot{I} (\text{CE } \langle \mu \nu \zeta$

NOTE2  $(\text{CE } \dot{I} u] \nu \mu \dot{s} U Z X, X A \dot{\delta} \dot{I} \cdot \dot{\delta} \dot{I} 9$

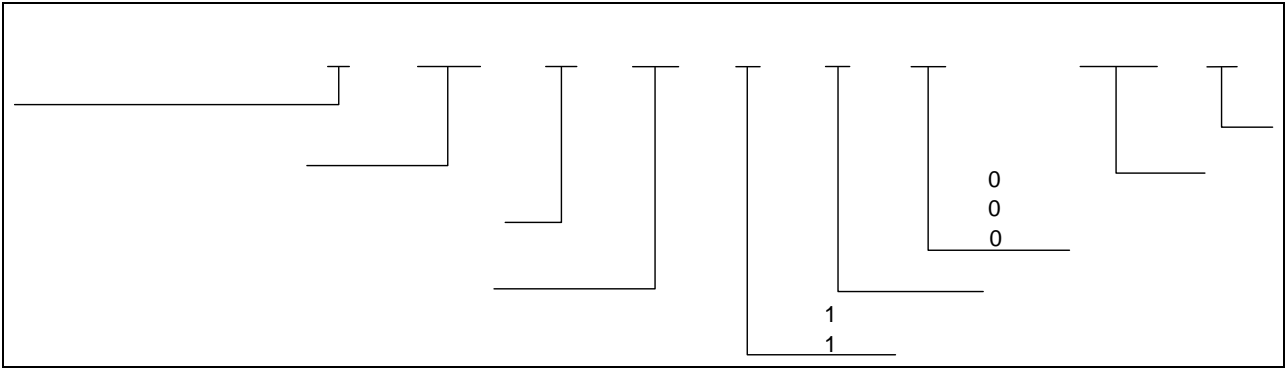
### ELECTRICAL CHARACTERISTICS

						9	





## ORDERING INFORMATION

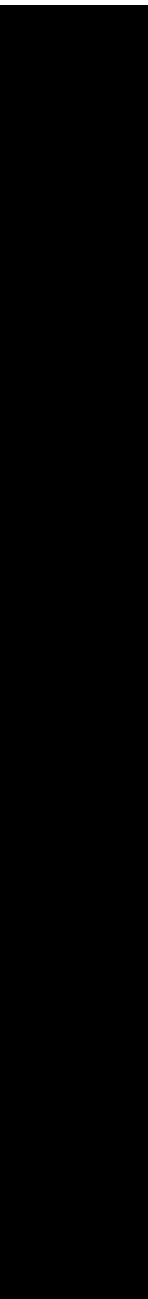


Packing Quantity	
Option	Quantity
/ W	ò ì h v ] š • l d μ
^ D	í î ï ï h v ] š • l Z o

## MARKING



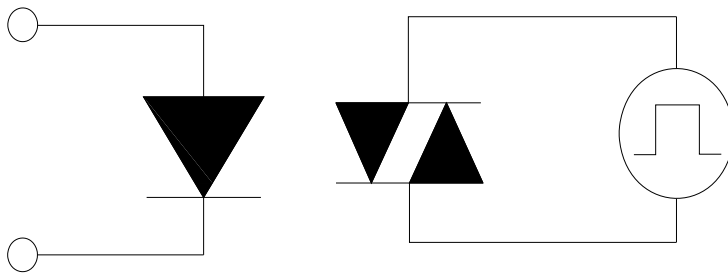






---

# TEST CIRCUITS



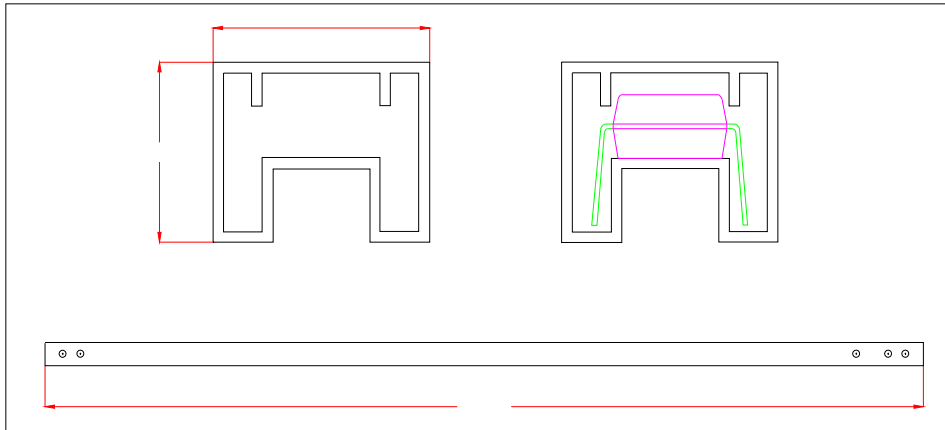






---

**TUBE SPECIFICATIONS (Dimensions in mm unless otherwise stated)**

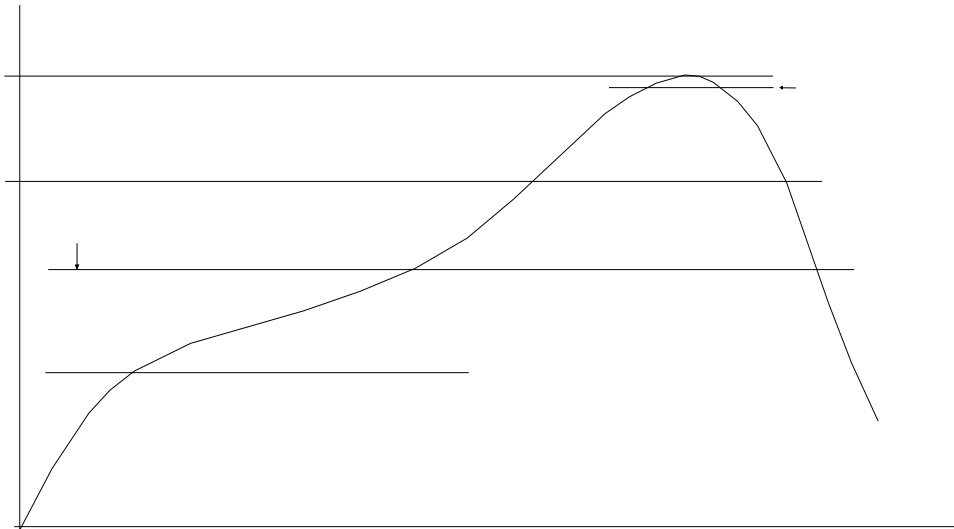
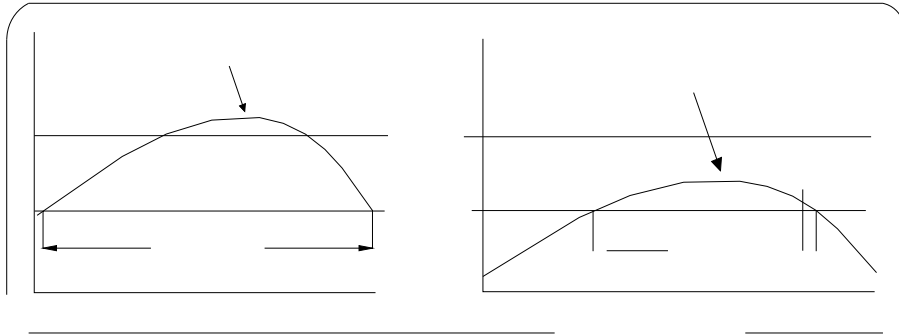


**CARRIER TAPE SPECIFICATIONS (Dimensions in mm unless otherwise stated)**

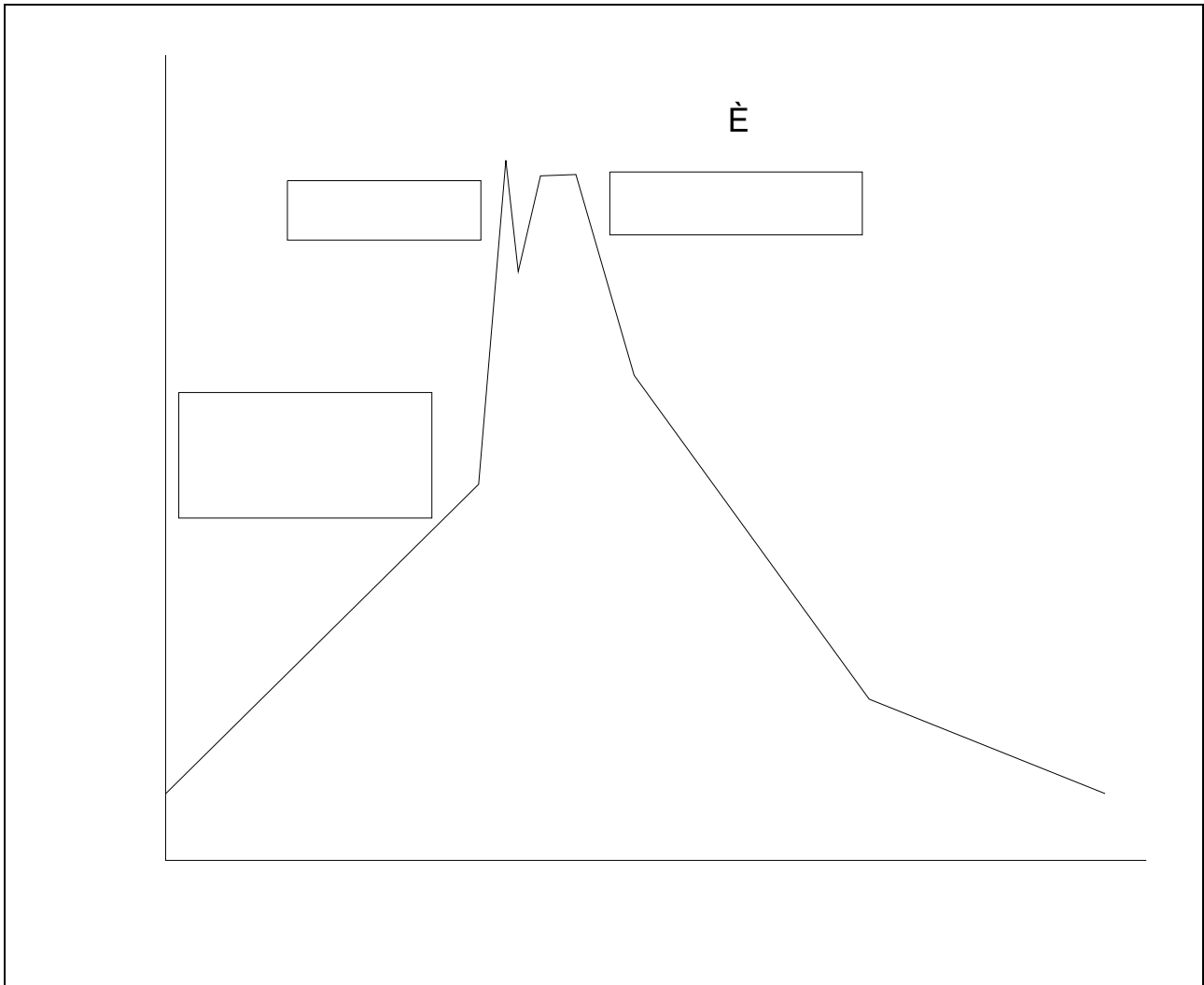
---



# REFLOW INFORMATION



# WAVE SOLDERING



## HAND SOLDERING BY SOLDERING IRON

	f

