



JOC355

Rev.A.1.0

DESCRIPTION:

The JOC355 combines an AlGaAs infrared emitting diode as the emitter which is optically coupled to a silicon planar darlington phototransistor detector in a plastic SOP4 package. With the robust coplanar double mold structure, JOC355 provides the most stable isolation feature. The products are widely used in sequence controller telephone/fax, system appliances, measuring instrument and programmable logic controller.

MAIN FEATURES

- Current transfer ratio CTR: 600%-7500% @ $I_F=1\text{mA}$, $V_{CE}=2\text{V}$
- High isolation voltage between input and output ($V_{iso}=3,750\text{Vrms}$)
- Operating temperature up to $+110^\circ\text{C}$
- Collector-Emitter voltage BV_{CEO} 40V
- CQC approved
- VDE approved
- UL approved
- The products comply with REACH and HF

ABSOLUTE MAXIMUM RATINGS (Temperature= 25°C)

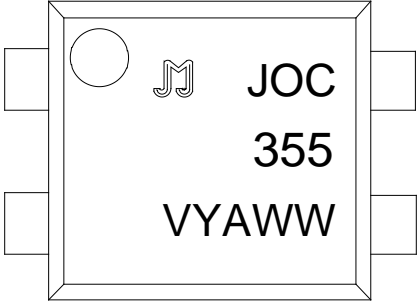
Parameter		Symbol	Value	Unit
Input	Forward Current	I_F	60	mA
	Peak Forward Current	I_{FP}	1	A
	Reverse Voltage	V_R	6	V
	Power Dissipation	P_D	100	mW
	Collector-emitter Voltage	V_{CEO}	40	V

Output

Isolation Voltage	V_{iso}	3750	Vrms
Operating Temperature	T_{opr}	-55~+110	
Storage Temperature	T_{stg}	-55~+	

ORDERING AND MARKING INFORMATION

MARKING INFORMATION



JOC : Company Abbr.
355 : Part Number
V : VDE Option
Y : Fiscal Year

Test Circuits

FIG.11: Test Circuits of Response Time

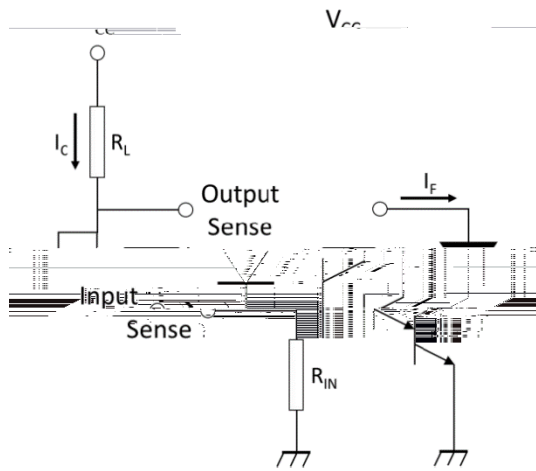


FIG.12: Curves of Response Time

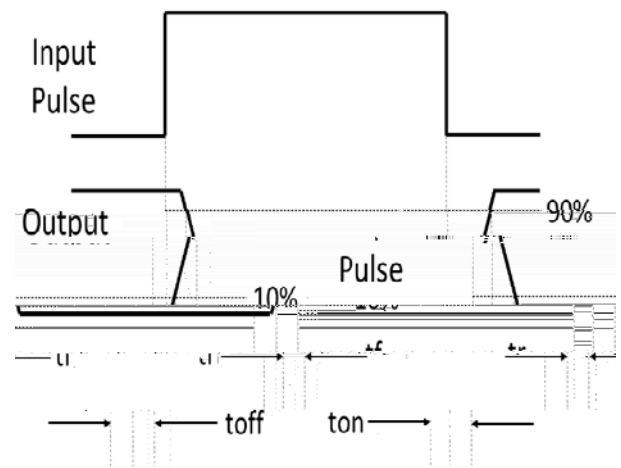
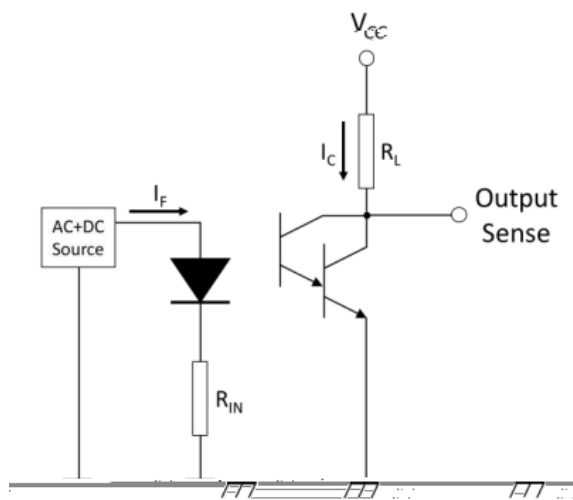
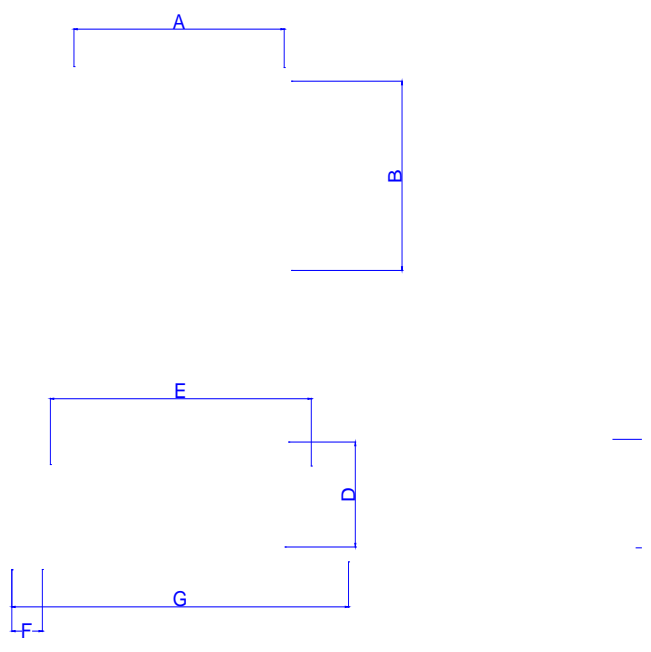


FIG.13: Test Circuits of Frequency Response

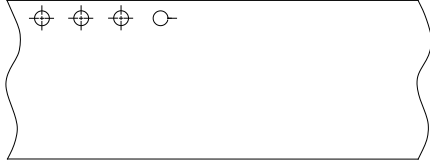


Package Dimension (Unit: mm) Dimension in Millimeter Dimension in Inches



CARRIER TAPE SPECIFICATIONS (Dimensions in mm unless otherwise stated)

Option T1



REFLOW INFORMATION

